

TABLE OF CONTENTS

SUBMERSIBLE PUMPS AND ACCESSORIES	1-9, 15-16
CONSTANT PRESSURE SYSTEM	10
JET PUMPS	11-13
CENTRIFUGAL PUMP	14
CABLE & ACCESSORIES	17
SUMP PUMPS & ACCESSORIES	18
HYDRANTS	19 - 21
TANKS & ACCESSORIES	22 - 26
INSTALLATION ACCESSORIES	27-29
POLY PIPE & ACCESSORIES	30-33
VALVES - FOOT, CHECK, BALL ETC.	34-37
WELL POINTS & SCREENS & WELL ACCESSORIES	38-42
RIG PARTS & BITS	43-46
WATER TREATMENT	47-50
WATER LEVEL INDICATORS	51
DRILLING MUD	52
THREAD SEALANTS, LUBRICANTS, ROPE & MISC.	53-56
BRASS, BLACK, GALVANIZED FITTINGS	57-64

Make a Difference.

SUBMERSIBLE PUMPS
FLINT & WALLING SERIES STAINLESS STEEL
C/W F&W MOTOR 4" - 3 WIRE - SINGLE PHASE

PART #	MODEL	HP	VOLTS	US GPM	STAGES	PRICE
F&W8469690	4F05S05	1/2	115	5	15	
F&W8469700	4F05S05	1/2	230	5	15	
F&W8469710	4F07S05	1/2	230	07	10	
F&W8469720	4F10S05	1/2	115	10	8	
F&W8469740	4F10S05	1/2	230	10	8	
F&W8469760	4F05S07	3/4	230	5	21	
F&W8469763	4F07S07	3/4	230	7	14	
F&W8469765	4F10S07	3/4	230	10	12	
F&W8469770	4F05S10	1	230	5	26	
F&W8469773	4F07S10	1	230	7	18	
F&W8469772	4F10S10	1	230	10	15	
F&W8469775	4F19S10	1	230	19	9	
F&W8469780	4F19S15	1 1/2	230	19	12	
F&W8469783	4F10S20	2	230	10	26	
F&W8469785	4F19S20	2	230	19	16	

ALL F&W 3 WIRE MOTORS INLCUDE F&W CONTROL BOX
ALL PUMPS 1 1/4" DISCHARGE
ALL PUMPS INCLUDE SPLICE KIT
C/W F&W MOTOR 4" - 2 WIRE - SINGLE PHASE - NO CONROL BOX REQ.

PART #	MODEL	HP	VOLTS	US GPM	STAGES	PRICE
F&W8468690	4F05S05	1/2	115	5	15	
F&W8468700	4F05S05	1/2	230	5	15	
F&W8468710	4F07505	1/2	230	7	10	
F&W8468715	4F07505	1/2	115	7	10	
F&W8468720	4F10S05	1/2	115	10	8	
F&W8468740	4F10S05	1/2	230	10	8	
F&W8468760	4F05S07	3/4	230	5	21	
F&W8468763	4F07S07	3/4	230	7	14	
F&W8468765	4F10S07	3/4	230	10	12	
F&W8468767	4F05S10	1	230	5	26	
F&W8468773	4F07S10	1	230	7	18	
F&W8468768	4F10S10	1	230	10	15	
F&W8468775	4F19S10	1	230	19	9	
F&W8468770	4F10S15	1 1/2	230	10	20	
F&W8468780	4F19S15	1 1/2	230	19	12	

Sales Tax: Extra if applicable

* PRICE ON REQUEST

Prices subject to change without notice.

Make a Difference.



PUMP WET ENDS

FLINT & WALLING STAINLESS STEEL 5 TO 19 GPM

PART #	MODEL	HP	US GPM	STAGES	PRICE
8576400	4F05S05	1/2	5	15	
8576425	4F07S05	1/2	7	10	
8576550	4F10S05	1/2	10	8	
8576450	4F05S07	3/4	5	21	
8576558	4F07S07	3/4	7	14	
8576600	4F10S07	3/4	10	12	
8576500	4F05S10	1	5	26	
8576635	4F07S10	1	7	18	
8576640	4F10S10	1	10	15	
8576650	4F19S10	1	19	9	
8578350	4F10S15	1 1/2	10	20	
8576700	4F19S15	1 1/2	19	12	
8576740	4F10S20	2	10	26	
8576750	4F19S20	2	19	16	


ALL PUMPS 1 1/4" DISCHARGE


FLINT & WALLING STAINLESS STEEL 35 TO 85 GPM

PART #	MODEL	HP	US GPM	STAGES	DISCHARGE	PRICE
ZPUM0102	4F35S15	1 1/2	35	5	2"	
8577372	4F35S20	2	35	7	2"	
8577375	4F35S30	3	35	10	2"	
8577380	4F35S50	5	35	16	2"	
	4F55S15	1 1/2	55	4	2"	
8577390	4F55S20	2	55	5	2"	
8577400	4F55S30	3	55	7	2"	
8577405	4F55S50	5	55	11	2"	
	4F55S75	7 1/2	55	18	2"	
8577410	4F85S20	2	85	4	2"	
8577420	4F85S30	3	85	6	2"	
8577450	4F85S50	5	85	10	2"	
ZPUM0050	4F85S75	7 1/2	85	15	2"	

Requires Check Valve - Not Included

Sales Tax: Extra if applicable

* PRICE ON REQUEST

Prices subject to change without notice.

SUBMERSIBLE MOTORS & CONTROL BOXES
FLINT & WALLING USA
MOTORS -- 4"--3 WIRE--SINGLE PHASE

PART #	DESCRIPTION	PRICE
8375450	1/2 HP - 115 volt - 137426	
8375550	1/2 HP - 230 volt - 137428	
8375650	3/4 HP - 230 volt - 137430	
8375850	1 HP - 230 volt - 137432	
8375950	1 1/2 HP - 230 volt - 137434	
8376050	2 HP - 230 volt - 137435	

MOTORS--4"--2 WIRE--SINGLE PHASE

PART #	DESCRIPTION	PRICE
8376550	1/2 HP - 115 volt - 137412	
8376650	1/2 HP - 230 volt - 137414	
8377050	3/4 HP - 230 volt - 137416	
8377120	1 HP - 230 volt - 137418	
8377130	1 1/2 HP - 230 volt - 137420	

CONTROL BOXES

PART #	DESCRIPTION	PRICE
8127250	1/2 HP - 115 volt - 022875	
8127350	1/2 HP - 230 volt - 022876	
8127450	3/4 HP - 230 volt - 022877	
8127550	1 HP - 230 volt - 022878	
8127650	1 1/2 HP - 230 volt - 022879	
8127750	2 HP - 230 volt - 022880	

MERRILL SWITCH/CONTROL BOX COMBINED

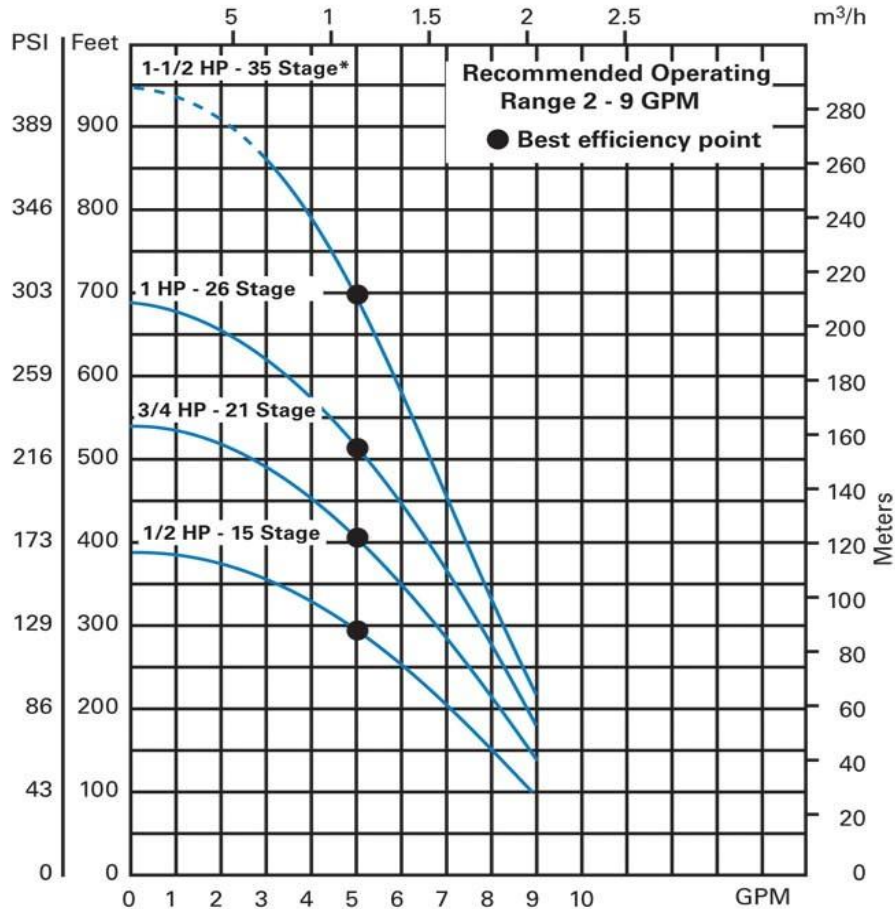
PART #	DESCRIPTION	PRICE
8516020	1/2 HP - 230V 40/60	
F8476156	1/3-1HP CONTROL/PUMP QD SAVER 023803	

Make a Difference.



HP Size and Model No.	Stages	Weight		Disch. Pressure PSI	DEPTH TO WATER LEVEL IN FEET																				Max. Pressure																										
		Motor Type	Ship Wt.		CAPACITIES IN GALLONS PER MINUTE																				Ft.	PSI																									
					20	40	60	80	100	120	140	160	180	200	225	250	275	300	325	350	400	450	500	550			600	650	700	800																					
1/2 HP 4F05A05 4F05S05 4F05G05	15	1 PH 3 Wire	29	0					8.9	8.5	8.2	7.8	7.4	7.0	6.5	5.9	5.3	4.7	4.0	3.2																			390	168											
			40					8.8	8.4	8.1	7.7	7.3	6.9	6.5	6.0	5.5	4.8	4.1	3.3	2.3																															
			60					8.3	7.9	7.5	7.1	6.7	6.3	5.9	5.4	4.9	4.2	3.5	2.4																																
			80					7.5	7.1	6.7	6.2	5.8	5.3	4.8	4.2	3.6	2.7																																		
3/4 HP 4F05A07 4F05S07	21	1 PH 3 Wire	35	0					8.9	8.7	8.4	8.2	7.8	7.4	7.0	6.5	5.9	5.3	4.7	4.0	3.2																		550	238											
			40					8.8	8.6	8.3	8.1	7.8	7.5	7.2	6.9	6.5	6.1	5.7	5.3	4.3	3.0																														
			60					8.7	8.5	8.2	8.0	7.7	7.5	7.2	6.9	6.5	6.2	5.7	5.3	4.9	4.4	3.1																													
			80					8.2	7.9	7.7	7.4	7.1	6.8	6.5	6.2	5.8	5.4	4.9	4.5	3.9	3.3	1.3																													
1 HP 4F05A10 4F05S10	26	1 PH 3 Wire	43	0					9.0	8.8	8.6	8.4	8.2	7.9	7.7	7.4	7.2	6.9	6.6	6.0	5.3	4.6	3.7	2.5															695	300											
			40					8.7	8.5	8.3	8.1	7.9	7.7	7.5	7.2	6.9	6.7	6.3	6.0	5.4	4.6	3.7	2.5																												
		1 PH 2 Wire	43					8.5	8.3	8.1	7.9	7.7	7.5	7.2	7.0	6.7	6.4	6.1	5.8	5.5	4.7	3.8	2.7																												
			80					8.0	7.8	7.6	7.4	7.2	7.0	6.7	6.5	6.1	5.8	5.5	5.1	4.7	3.9	2.7																													
1-1/2 HP 4F05A15 4F05S15	35	1 PH 3 Wire	55	0											8.9	8.7	8.5	8.3	8.2	8.0	7.8	7.6	7.4	7.2	6.8	6.3	5.9	5.5	5.0	4.6	4.1	3.5																		950	411
			40													9.0	8.8	8.7	8.5	8.4	8.2	8.0	7.8	7.6	7.4	7.2	6.8	6.3	5.9	5.5	5.0	4.6	4.1	3.4																	
		1 PH 2 Wire	55													8.8	8.6	8.5	8.4	8.2	8.0	7.9	7.7	7.5	7.3	7.0	6.8	6.4	6.0	5.0	4.6	4.1	3.5																		
			80													8.5	8.1	8.2	8.0	7.8	7.7	7.5	7.3	7.1	6.8	6.6	6.4	6.0	5.6	5.1	4.7	4.1	3.5																		

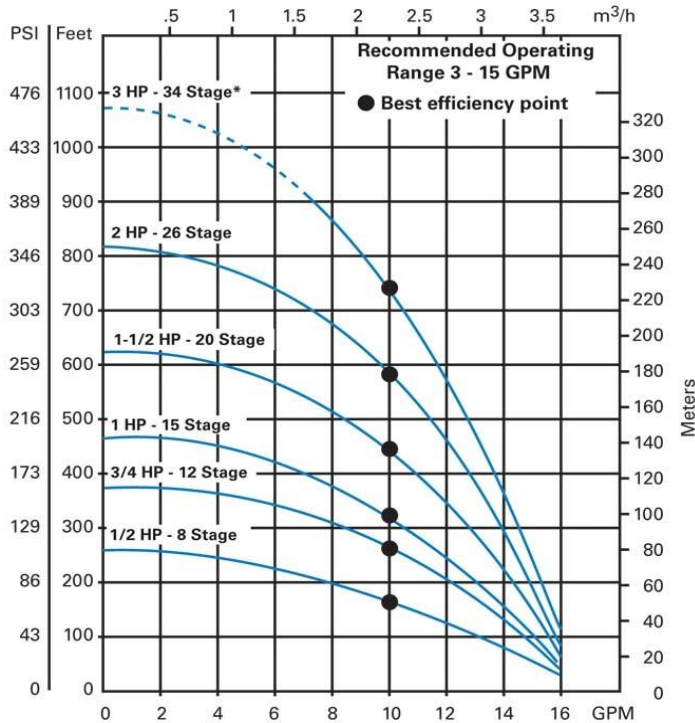
NOTE: Pipe friction loss in drop pipe is not included in chart above.
1/2 thru 2 HP, 1 PH pumps feature Flint & Walling motors.



5GPM

HP Size and Model No.	Stage	Weight		Discharge Pressure PSI	DEPTH TO WATER LEVEL IN FEET																				Max. Press.					
		Motor Type	Ship Wt.		20	40	60	80	100	120	140	160	180	200	225	250	275	300	350	400	450	500	550	600	650	700	800	900	Ft.	PSI
		CAPACITIES IN GALLONS PER MINUTE																												
1/2 HP 4F10A05 4F10S05 4F10G05	8	1 PH	27	0																								250	108	
		3 Wire	27	20	14.6	14.1	13.3	12.5	11.6	10.5	9.5	7.8	6.0	3.4	6.3	2.1														
		1 PH		40	12.8	12.0	11.0	10.0	8.7	6.9	4.8																			
		2 Wire		60	10.9	9.9	8.6	6.7	4.5																					
				80	7.8	4.9	3.6																							
3/4 HP 4F10A07 4F10S07 4F10G07	12	1 PH	32	0				15.0	14.6	14.1	13.6	13.1	12.5	12.0	11.3	10.4	9.7	8.5	5.7										375	162
		3 Wire	32	20	14.3	13.8	13.3	12.8	12.4	11.4	11.0	10.5	9.6	8.9	7.9	6.1	3.5													
		1 PH		40	13.2	12.6	12.1	11.5	10.9	10.3	9.6	8.7	7.7	6.6	3.8															
		2 Wire		60	11.9	11.4	10.6	10.0	9.3	8.4	7.4	6.2	3.8																	
				80	11.9	11.4	10.6	10.0	9.3	8.4	7.4	6.2	3.8																	
1 HP 4F10A10 4F10S10 4F10G10	15	1 PH	36	0				14.7	14.3	13.9	13.6	13.1	12.6	12.0	11.4	10.8	9.3	7.4	3.8										470	203
		3 Wire	36	20	14.9	14.5	14.1	13.7	13.3	12.9	12.4	11.9	11.4	10.9	10.3	9.5	8.6	7.9	4.5											
		1 PH		40	13.9	13.5	12.7	12.7	12.3	11.8	11.2	10.9	10.3	9.7	8.9	7.8	6.6	5.0												
		2 Wire		60	13.1	12.6	12.1	11.7	11.2	10.7																				
				80	13.1	12.6	12.1	11.7	11.2	10.7																				
1-1/2 HP 4F10A15 4F10S15 4F10G15	20	1 PH	47	0							15.0	14.7	14.4	14.1	13.8	13.4	12.9	12.6	11.8	10.8	9.8	8.5	4.8	3.9	630	272				
		3 Wire	47	20					14.9	14.6	14.3	13.9	13.6	13.4	13.0	12.7	12.4	11.9	11.5	11.0	10.0	8.6	7.1	4.4						
		1 PH		40			15.0	14.8	14.5	14.2	13.9	13.6	13.4	13.0	12.7	12.4	11.9	11.5	11.0	10.0	8.6	7.1	4.4							
		2 Wire		60	14.7	14.5	14.1	13.9	13.6	13.2	12.9	12.7	12.3	12.0	11.5	11.1	10.6	10.1	8.8	7.3	4.8									
				80	14.1	13.8	13.5	13.2	12.9	12.6																				
2 HP 4F10A20 4F10S20	26	1 PH	62	0							15.0	14.7	14.5	14.3	13.9	13.7	13.4	13.1	12.5	11.8	11.2	10.4	9.6	815	352					
		3 Wire	62	20					14.9	14.6	14.4	14.2	13.9	13.6	13.4	13.2	12.9	12.6	12.3	11.9	11.3	10.5	9.7							
		3 PH	53	40					14.9	14.6	14.4	14.2	13.9	13.6	13.4	13.2	12.9	12.6	12.3	11.9	11.3	10.5	9.7							
		3 Wire	53	60	14.7	14.5	14.3	14.1	13.8	13.6	13.4	13.2	13.0	12.6	12.3	12.0	11.7	11.4	10.5	9.7										
				80	14.7	14.5	14.3	14.1	13.8	13.6	13.4	13.2	13.0	12.6	12.3	12.0	11.7	11.4	10.5	9.7										
3 HP 4F10A30 4F10S30	34	1 PH	79	0							15.5	15.3	15.1	14.8	14.6	14.3	14.1	13.9	13.5	13.1	12.6	12.1	11.7	11.1	10.6	9.3	7.5	1070	462	
		3 Wire	79	20					15.5	15.3	15.0	14.8	14.6	14.4	14.2	14.0	13.8	13.4	13.0	12.7	12.3	11.8	11.3	10.5	10.0	8.5	6.8			
		3 PH	70	40					15.4	15.2	15.0	14.8	14.6	14.4	14.2	14.1	14.0	13.8	13.6	13.2	12.6	12.2	11.7	11.3	10.7	10.1	9.6			7.6
		3 Wire	70	60	15.3	15.0	14.8	14.6	14.4	14.2	14.1	14.0	13.9	13.7	13.6	13.4	13.1	12.8	12.2	11.9	11.4	10.8	10.2	9.5	8.6	7.5				
				80	15.3	15.0	14.8	14.6	14.4	14.2	14.1	14.0	13.9	13.7	13.6	13.4	13.1	12.8	12.2	11.9	11.4	10.8	10.2	9.5	8.6	7.5				

NOTE: Pipe friction loss in drop pipe is not included in chart above. 1/2 thru 2 HP, 1 PH pumps feature Flint & Walling motors.



10GPM

Sales Tax: Extra if applicable

*PRICE ON REQUEST

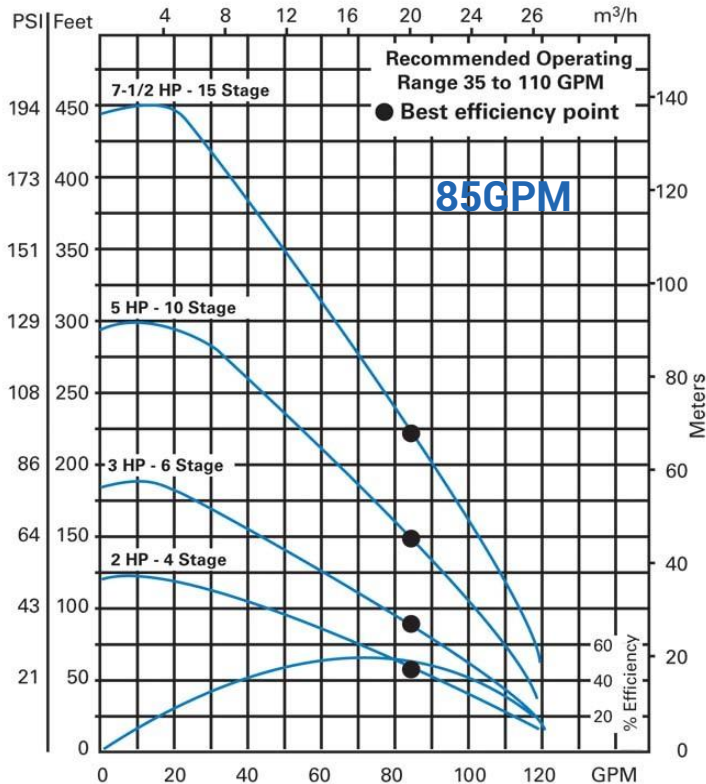
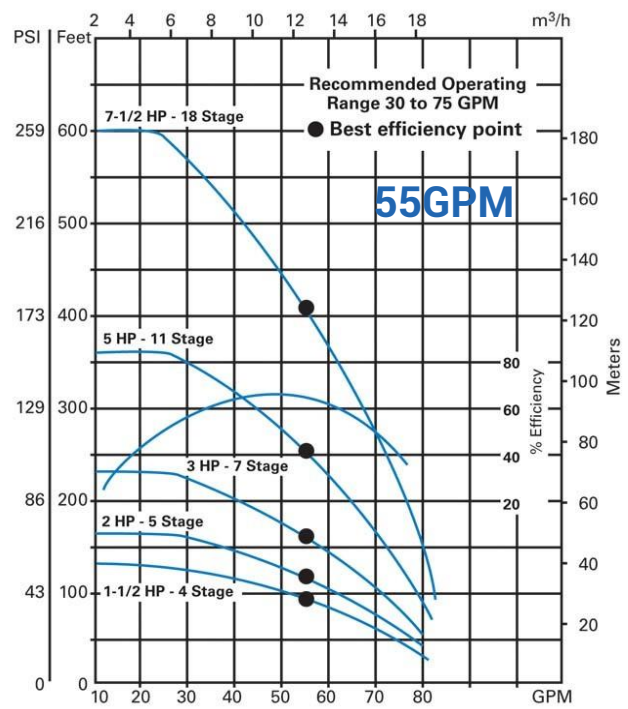
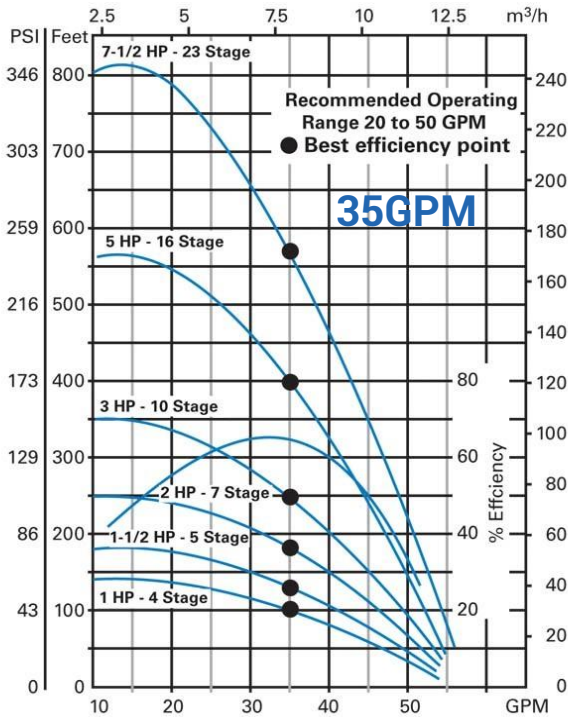
Prices subject to change without notice.

Make a Difference.



SUBMERSIBLE SELECTION CHART

4" 35, 55 & 85 G.P.M.



Sales Tax: Extra if applicable

*PRICE ON REQUEST

Prices subject to change without notice.

Make a Difference.

CONSTANT PRESSURE
4" COMMANDER PRO15 CONSTANT PRESSURE FLINT & WALLING

PART #	MODEL	GPM	DESCRIPTION	PRICE
	VS1507LT	7	PACKAGE INCLUDES PUMP, MOTOR, 1 1/2 HP AND VS15 CONTROLLER	
M8474069LT	VS1510LT	10		
M8474076LT	VS1519LT	19		
M8474067LT	VS1527LT	27		

4" COMMANDER PRO20 CONSTANT PRESSURE FLINT & WALLING

PART #	MODEL	GPM	DESCRIPTION	PRICE
	VS2007LT	7	COMPLETE SYSTEM PACKAGE INCLUDES PUMP, MOTOR, 2HP AND VS20 CONTROLLER	
	VS2010LT	10		
	VS2019LT	19		
	VS2027LT	27		
	VS2035LT	35		

PRO 30 - CALL FOR PRICING
CONSTANT PRESSURE SYSTEM FITTING

PART #	MODEL	DESCRIPTION	PRICE
8528680	SSMK12510C	S/S MANIFOLD PACKAGE	
8528677		PACKAGE C/W BRACKET	
8528681	CPSMMB	BRACKET FOR MANIFOLD PACKAGE	

FRANKLIN MOTORS & CONTROL BOXES

PART #	MODEL	DESCRIPTION	PRICE
8376000	M137435	MOTOR - 4", 2HP, 230V, 1PH 3W	
8376300	M139422	MOTOR - 4", 3HP, 230V, 1PH, 3W	
8377200	M137456	MOTOR - 4", 5HP, 230V, 1PH, 3W	
8127700	126321	CONTROL BOX, 2HP, 230V	
8127800	126322	CONTROL BOX, 3HP, 230V	
8127900	137225	CONTROL BOX, 5HP, 230V	
8476150	22494	REGULAR PUMPTEC	
8476153	138365	QD PUMPTEC	

Make a Difference.

FLINT & WALLING JET PUMPS

EK SERIES - SHALLOW WELL CAST IRON

PART #	HP	VOLTS	DESCRIPTION	PRICE
8459010	1/2	115/230 V	EK05S JET PUMP	
8459020	3/4	115/230 V	EK07S JET PUMP	
8459030	1	115/230V	EK10S JET PUMP	

**INCLUDES PRESSURE SWITCH AND SHALLOW WELL EJECTOR*

CPJ SERIES JET PUMP

PART #	HP	VOLTS	DESCRIPTION	PRICE
8459015	1/2	115/230 V	CPJ05SB	
8459017	3/4	115/230 V	CPJ07SB	

**INCLUDES PRESSURE SWITCH AND SHALLOW WELL EJECTOR*

CPH SERIES CONVERTIBLE

PART #	HP	VOLTS	DESCRIPTION	PRICE
8459055	1/2	115/230 V	CPH05 PUMP, MOTOR, SWITCH	
8459060	3/4	115/230 V	CPH07 PUMP, MOTOR, SWITCH	
8459065	1	115/230 V	CPH10 PUMP, MOTOR, SWITCH	

**CPH SERIES REQUIRES CONTROL VALVE PACKAGE WHEN USED FOR DEEP WELL APPLICATIONS*

DURO JET PUMP

PART #	HP	MODEL	PRICE
8459025	1/2	DCJ500 #6330	

EJECTOR PACKAGES CPH SERIES

PART #	H.P.	EJECTOR	PRICE
8200675	1/3	DW40E1726	
8200650		DW40E1622	
8200655	1/2	DW40E1730	
8200665		DW40E1828	
8200650		DW40E1622	
8200660	3/4	DW40E1630	
8200675		DW40E1726	
8200681		DW40E1520	
8200680	1	DW40E1634	
8200665		DW40E1828	
8200681		DW40E1520	



Sales Tax: Extra if applicable

*PRICE ON REQUEST

Prices subject to change without notice.

EK SHALLOW WELL JET PUMP

EK SHALLOW WELL CAPACITIES

Model	HP	Suction Lift Ft.	Discharge Pressures (PSI)				Shut Off Pressure @ 0 Lift (PSI)	Suction & Discharge	Pressure Switch Setting - PSI	Pump Shipping Weight
			20	30	40	50				
			CAPACITY - U.S. GALLONS PER MINUTE							
EK05S	1/2	5	10.5	9.5	5.8	4.0	60	1-1/4" x 3/4"	20-40	40
		15	7.6	7.3	4.5	2.5				
		25	4.5	4.2	3.5	2.0				
EK07S	3/4	5	15.5	15.0	10.0	5.8	65	1-1/4" x 3/4"	30-50	41
		15	11.9	11.7	9.1	3.8				
		25	6.0	5.8	5.2	2.0				
EK10S	1	5	20.0	20.0	19.5	18.3	65	1-1/4" x 1"	30-50	51
		15	15.8	15.5	15.0	14.5	60			
		25	10.0	9.7	9.5	9.0	55			

Maximum Pump Case Pressure = 150 PSI



CPJ JET PUMP

CPJS SHALLOW WELL PERFORMANCE WITH SHALLOW WELL EJECTORS

Model No.	HP	Ejector* Assembly	Suction Lift Ft.	Discharge Pressures (PSI)					Suction & Discharge	Pressure Switch Setting	Shut Off Pressure PSI	Pump Shipping Weight
				20	30	40	50	60				
			CAPACITY - U.S. GALLONS PER MINUTE									
CPJ03SB	1/3	SW03E-1626	5	11.3	10.7	9.5	6.7	1-1/4" X 3/4"	30-50	74	49	
			15	8.7	8.5	7.8	5.3					
			25	5.3	5.3	5.2	4.2					
CPJ05SB	1/2	SW05E-1630	5	17.2	16.8	14.8	10.0	1-1/4" X 3/4"	30-50	69	50	
			15	12.8	12.7	12.2	7.7					
			25	7.7	7.5	7.2	5.3					
CPJ07SB	3/4	SW07E-1432	5	19.8	19.5	19.2	18.0	1-1/4" X 1"	30-50	65	58	
			15	15.5	15.2	14.8	14.2					
			25	9.8	9.5	9.3	8.8					
CPJ10SB	1	SW10E-1334	5	23.7	23.5	23.3	23.0	1-1/4" X 1"	30-50	70	62	
			15	18.3	18.3	18.2	18.0					
			25	11.7	11.7	11.5	11.3					
CPJ15S	1-1/2	SW15E-1238	5	30.0	29.8	29.8	29.8	1-1/4" X 1"	30-50	77	72	
			15	24.0	23.8	23.7	23.5					
			25	15.0	15.0	15.0	14.8					

* Ejector assembly included

Maximum Pump Case Pressure = 150 PSI

Sales Tax: Extra if applicable

*PRICE ON REQUEST

Prices subject to change without notice.

CPH SERIES DEEP WELL PERFORMANCE

Model Number	H.P.	Ejector Assembly	Min. Oper. Press.	Disch. Press.	Capacities (G.P.M.) & Shut Off (P.S.I.) at Vertical Distance to Water (Feet)												Press. Switch Setting	Pump Ship. Weight	
					20	30	40	50	60	70	80	90	100	110	120	130			140
CPH03	1/3	DW40E-1726	20	20 40 Shut Off	10.8 6.0 70	8.3 4.7 65	7.0 3.8 61											20-40	56 46 38
		DW40E-1622	24	20 40 Shut Off		7.0 4.3 77	6.2 3.5 72	5.5 3.0 67	4.7 2.3 62									20-40	
CPH05	1/2	DW40E-1730	25	30 50 Shut Off	12.5 5.5 67	10.8 3.7 62	8.7 2.0 57											30-50	58 48 40
		DW40E-1828	25-28	30 50 Shut Off	11.2 6.7 75	10.8 5.5 69	8.8 3.8 64	7.2 2.3 59	5.0 0.8 54								30-50		
		DW40E-1622	30	30 50 Shut Off			6.7 4.3 91	6.0 3.8 86	5.3 3.3 80	4.3 2.5 74	3.3 1.7 68	2.5 0.8 60						30-50	
CPH07	3/4	DW40E-1630	35-37	30 50 Shut Off	16.7 12.5 75	14.2 8.3 70	12.2 5.0 65	8.3 2.5 59										30-50	61 54 50
		DW40E-1726	37-39	30 50 Shut Off	11.7 9.2 98	11.7 9.2 91	11.5 8.2 86	10.3 7.0 80	9.0 5.7 74	7.7 4.3 69	6.2 3.2 65	4.8 1.7 58					30-50		
		DW40E-1520	39	30 50 Shut Off							5.0 3.7 105	4.8 3.3 95	4.3 3.0 90	3.7 2.7 85	3.2 2.0 80	2.7 1.8 75		30-50	
CPH10	1	DW40E-1634	46	30 50 Shut Off	19.2 10.0 71	15.0 7.5 66	11.7 5.0 62	8.3 2.5 57										30-50	65 58 54
		DW40E-1828	46-47	30 50 Shut Off	13.0 12.0 110	13.0 12.0 105	12.8 10.8 99	12.5 9.5 93	10.5 7.8 87	9.0 6.2 81	7.5 5.0 76	5.8 3.5 70	4.0 2.0 64				30-50		
		DW40E-1520	46/47	30 50 Shut Off							5.5 5.2 130	5.5 4.7 123	5.0 4.2 117	4.5 3.7 110	3.8 3.2 104	3.5 2.7 98	2.7 2.2 92	30-50	

CPJ & CPH SHALLOW WELL CAPACITIES WITH CONVERTIBLE EJECTOR

Model No.	HP	Ejector Assembly	Min. Oper. Press.	Disch. Press. PSI	Vertical Distance to Water in Feet												Press. Switch Setting	Pump Ship Wt.	
					20	30	40	50	60	70	80	90	100	110	120	130			140
CPJ05B CPH05	1/2	DW40E-1730	25	30 50 Shut Off	12.5 5.5 67	10.8 3.7 63	8.7 2.0 57											30-50	46 38
		DW40E-1828	25-28	30 50 Shut Off	11.2 6.7 75	10.8 5.5 69	8.8 3.8 64	7.2 2.3 59	5.0 0.8 54								30-50		
		DW40E-1622	30	30 50 Shut Off			6.7 4.3 91	6.0 3.8 86	5.3 3.3 80	4.3 2.5 74	3.3 1.7 68	2.5 0.8 60						30-50	
CPJ07B CPH07	3/4	DW40E-1630	35-37	30 50 Shut Off	16.7 12.5 75	14.2 8.3 70	12.2 5.0 65	8.3 2.5 59										30-50	56
		DW40E-1726	37-39	30 50 Shut Off	11.7 9.2 98	11.7 9.2 91	11.5 8.2 86	10.3 7.0 80	9.0 5.7 74	7.7 4.3 69	6.2 3.2 65	4.8 1.7 58					30-50		
		DW40E-1520	39	30 50 Shut Off							5.0 3.7 105	4.8 3.3 95	4.3 3.0 90	3.7 2.7 85	3.2 2.0 80	2.7 1.8 75		30-50	
CPJ10B CPH10	1	DW40E-1634	46	30 50 Shut Off	19.2 10.0 71	15.0 7.5 66	11.7 5.0 62	8.3 2.5 57										30-50	58 49
		DW40E-1828	46-47	30 50 Shut Off	13.0 12.0 110	13.0 12.0 105	12.8 10.8 99	12.5 9.5 93	10.5 7.8 87	9.0 6.2 81	7.5 5.0 76	5.8 3.5 70	4.0 2.0 64				30-50		
		DW40E-1520	46-47	30 50 Shut Off							5.5 5.2 130	5.5 4.7 123	5.0 4.2 117	4.5 3.7 110	3.8 3.2 104	3.5 2.7 98	2.7 2.2 92	30-50	
CPJ15	1-1/2	DW40E-1736	46-52	30 50 Shut Off	21.7 15.0 80	17.5 11.7 76	13.3 8.3 65	10.0 5.0 60	6.7 2.7 60									30-50	66
		DW40E-1728	50-53	30 50 Shut Off			12.8 11.7 105	12.5 11.3 98	10.7 9.7 92	9.0 7.8 87	7.7 6.7 82	6.2 5.0 77	5.0 3.3 72	3.5 2.5 65				30-50	
		DW40E-1520	52-54	30 50 Shut Off							5.3 5.2 135	5.3 5.0 128	5.2 4.7 123	5.0 4.2 118	4.3 3.8 112	3.8 3.3 105	3.3 2.8 100	30-50	

Maximum Pump Case Pressure = 150 PSI
 * Suction & pressure pipe tapping 1-1/4" x 1"



Sales Tax: Extra if applicable

*PRICE ON REQUEST

Prices subject to change without notice.

SELF PRIMING SPJ SERIES

PART #	DESCRIPTION	PRICE
	3/4 HP PUMP P	
8475090	1 HP PUMP P	
	1 1/2 HP PUMP P	
8475100	1 1/2 HP PUMP B	
8475150	2 HP PUMP B	
<i>P = THERMOPLASTIC B = BRASS IMPELLER</i>		


SUMP & EFFLUENT PUMPS ZOELER

PART #	DESCRIPTION	PRICE
8466460	ZOELLER M53 VERTICAL SWITCH	
8466461	ZOELLER M53 NO SWITCH	

SEWAGE PUMPS

PART #	DESCRIPTION	PRICE
8467312	DURO SEW50 1/2HP 2" SOLIDS 20' CORD #8097	
8466463	ZOELLER N266 1/2 HP 2" DISCHARGE	
	ZOELLER BN266 1/2 HP 2" DISCHARGE C/W SWITCH	

FLOAT SWITCHES

PART #	DESCRIPTION	PRICE
8515125	10FT WITH PLUG #GF10W10FI	
8515135	20 FT WITH PLUG	
8515120	10FT WITH PLUG REVERSE ACTING #GW1CW10FI	
8515200	20FT WITH PLUG REVERSE ACTING	
3705020	FLOAT ASSEMBLY 3/4" W/5" PLASTIC BALL	

Make a Difference.

SUBMERSIBLE PUMPS						
WILO TWI SERIES STAINLESS STEEL						
C/W 4" - 3 WIRE - SINGLE PHASE MOTOR						
Part #	Model	HP	Volts	GPM	Stages	Price
M8474068	NR 405-13	1/2	115	5	13	
M8474070	NR 405-13	1/2	230	5	13	
M8474072	NR 405-18	3/4	230	5	18	
	NR 405-22	1	230	5	22	
	NR 410-26	1 1/2	230	5	26	
M8474095	NR 410-9	1/2	115	10	9	
M8474085	NR 410-9	1/2	230	10	9	
M8475010	NR 410-12	3/4	230	10	12	
M8475015	NR 410-15	1	230	10	15	
	NR 410-21	1 1/2	230	10	21	
	NR 410-27	2	230	10	27	
	NR 418-5	1/2	230	18	5	
	NR 418-7	3/4	230	18	7	
M8476015	NR 418-9	1	230	18	9	
	NR 418-13	1 1/2	230	18	13	
	NR 418-17	2	230	18	17	

•CONTROL BOXES SOLD SEPERATLY

•SPLICE KITS SOLD SEPERATLY

WILO TWU SERIES STAINLESS STEEL						
C/W 4" - 3 WIRE - SINGLE PHASE MOTOR						
Part #	Model	HP	Volts	GPM	Stages	Price
M8476070	TWU410-7	1/2	230	10	7	
M8476080	TWU410-7	1/2	115	10	7	
M8476095	TWU410-10	3/4	230	10	10	
8526090	TWU410-7	1/2	Pump End Only		7	

WILO TWI 3" SERIES STAINLESS STEEL						
C/W 3" - 3 WIRE - SINGLE PHASE MOTOR						
Part #	Model	HP	Volts	GPM	Stages	Price
M8463123	TWI310-11	1/2	230	10	11	
M8463343	TWI310-17	1/2	230	10	17	
M8463103	TWI310-25	3/4	230	10	25	

Make a Difference.

SUBMERSIBLE PUMPS						
WILO TWI SERIES STAINLESS STEEL						
C/W 4" - 2 WIRE - SINGLE PHASE MOTOR						
Part #	Model	HP	Volts	GPM	Stages	Price
M8474055	NR 405-13	1/2	115	5	13	
M8474060	NR 405-13	1/2	230	5	13	
M8474065	NR 405-18	3/4	230	5	18	
	NR 405-22	1	230	5	22	
	NR 405-26	1 1/2	230	5	26	
M8474090	NR 410-9	1/2	115	10	9	
M8474080	NR 410-9	1/2	230	10	9	
M8475000	NR 410-12	3/4	230	10	12	
M8475005	NR 410-15	1	230	10	15	
	NR 410-21	1 1/2	230	10	21	
	NR 418-5	1/2	115	18	5	
	NR 418-5	1/2	230	18	5	
M8475020	NR 418-7	3/4	230	18	7	
	NR 418-9	1	230	18	9	
	NR 418-13	1 1/2	230	18	13	

- ALL PUMPS 1 1/4" DISCHARGE
- SPLICE KITS SOLD SEPERATLY

WILO TWU SERIES STAINLESS STEEL						
C/W 4" - 2 WIRE - SINGLE PHASE MOTOR						
Part #	Model	HP	Volts	GPM	Stages	Price
M8476050	TWU410-7	1/2	230	10	7	
M8476060	TWU410-7	1/2	115	10	7	
M8476065	TWU410-10	3/4	230	10	10	
8526090	TWU410-7	1/2	Pump End Only		7	

WILO TWI 3" SERIES STAINLESS STEEL						
C/W 3" - 2 WIRE - SINGLE PHASE MOTOR						
Part #	Model	HP	Volts	GPM	Stages	Price
M8463122	TWI310-11	1/2	230	10	11	
M8463342	TWI310-17	1/2	230	10	17	

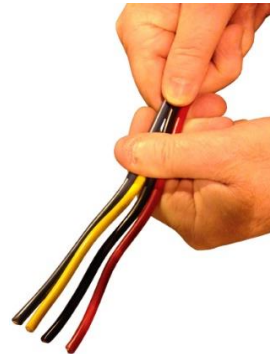
ACCESSORIES

SPLICING KITS

PART #	DESCRIPTION	PRICE
8161000	3 ONLY #10 THRU #14 BLACK HEAT SHRINK TUBES W/4 STA-KONS @ #1214K3834	
8161015	4 ONLY #10 THRU #14 CLEARHEAT SHRINK TUBES W/4 STA-KONS #CSK 38344	
8161510	4 BLACK #8 SHRINK TUBES C/W STA-KONS	
8161520	4 BLACK #6 SHRINK TUBES C/W STA-KONS	
8161530	4 BLACK #4 SHRINK TUBES C/W STA-KONS	
8161540	4 BLACK #2 SHRINK TUBES C/W STA-KONS	

SUBMERSIBLE CABLE - STRANDED

PART #	DESCRIPTION	PRICE/FT
8140026	3C14 WIRE (14/3)	
8140076	3C12 WIRE (12/3)	
8140066	3C10 WIRE (10/3)	
8140000	4C14 WIRE (14/4)	
8140051	4C12 WIRE (12/4)	
8140401	4C10 WIRE (10/4)	
8150401	3C8 X 1C10 WIRE (8/4)	
8150551	3C6 X 1C8 WIRE (6/4)	
8150552	3C4 X 1C6 WIRE (4/4)	



Sales Tax: Extra if applicable

*PRICE ON REQUEST

Prices subject to change without notice.

TULSAR HIGH WATER ALARM

PART #	DESCRIPTION	PRICE
8103570	HIGH WATER ALARM 50' CORD TULSAR	
ZPAC0720	LOW WATER ALARM 50' CORD TULSAR	



PITCHER PUMPS

PART #	DESCRIPTION	PRICE
8459000	DURABLE CAST IRON	



PITCHER PUMP PARTS

PART #	DESCRIPTION	PRICE
8162610	CUP LEATHER 711CL3000	
8555215	VALVE LEATHER 700LL350	

Sales Tax: Extra if applicable

*PRICE ON REQUEST

Prices subject to change without notice.

Make a Difference.

MERRILL YARD HYDRANTS ANY FLOW SERIES				
--	--	--	--	--

PART #	MODEL	DESCRIPTION	OVERALL LENGTH	PRICE
	AFNL7504	3/4" x 4 ft. BURY	81.5	
	AFNL7505	3/4" x 5 ft. BURY	93.5	
ZPAC9628	AFNL7506	3/4" x 6 ft. BURY	105.5	

HIGH CAPACITY ANYFLOW				
------------------------------	--	--	--	--

8276525	AF104	1" x 4 ft. BURY	81.5	
ZWWW0046	AF105	1" x 5 ft. BURY	93.5	
ZPAC0100	AF106	1" x 6 ft. BURY	105.5	

FLOW RATES FOR HIGH CAPACITY HYDRANTS				
--	--	--	--	--

	28 GPM @ 30 PSI
	32 GPM @ 40 PSI
	40 GPM @ 60 PSI
	45 GPM @ 80 PSI
	50 GPM @ 100 PSI

MERRILL HIDE-DRANT SANITARY YARD HYDRANT				
---	--	--	--	--

PART #	MODEL	DESCRIPTION	LENGTH	PRICE
	HIDE-27504	3/4" X 4' BURY	76.5	
	HIDE-27505	3/4" X 5' BURY	88.5	
	HIDE-27506	3/4" X 6' BURY	100.5	

WALL HYDRANT				
---------------------	--	--	--	--

PART #	MODEL	DESCRIPTION	LENGTH	PRICE
ZPAC2122	27412	12" FROST FREE	12"	

Sales Tax: Extra if applicable

*PRICE ON REQUEST

Prices subject to change without notice.

**MERRILL YARD HYDRANTS
C-1000 SERIES**

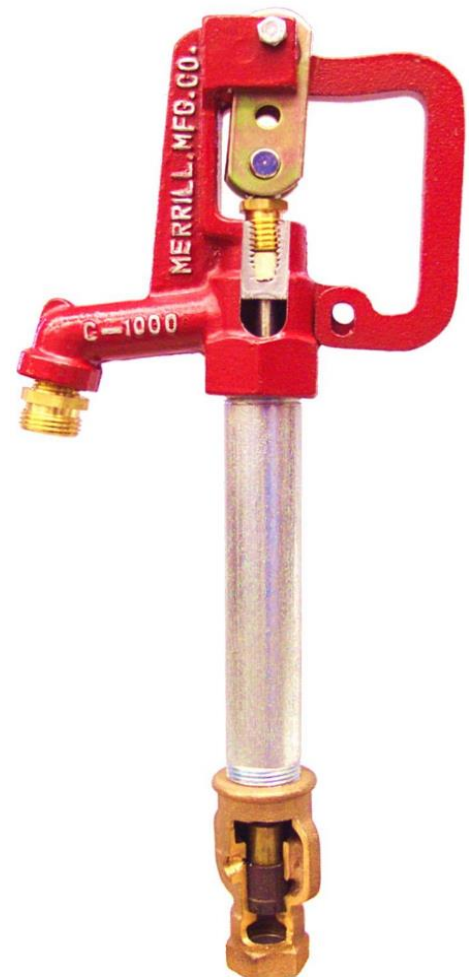
PART #	MODEL	DESCRIPTION	OVERALL LENGTH	PRICE
	CNL7501	3/4" x 1 ft. BURY	44.5 in.	
	CNL75015	3/4" x 1 1/2 ft. BURY	50.5 in.	
8276050	CNL7502	3/4" x 2 ft. BURY	56.5 in.	
8276100	CNL7503	3/4" x 3 ft. BURY	68.5 in.	
8276250	CNL7504	3/4" x 4 ft. BURY	80.5 in.	
8276300	CNL7505	3/4" x 5 ft. BURY	92.5 in.	
8276400	CNL7506	3/4" x 6 ft. BURY	104.5 in.	
	CNL7507	3/4" x 7 ft. BURY	116.5 in.	
8276450	CNL7508	3/4" x 8 ft. BURY	128.5 in.	
	CNL7510	3/4" x 10 ft. BURY	140.5 in.	

C-1000 Hydrant

C-1000 Flow Rates

WATER SYSTEM PRESSURE	GALLONS PER MINUTE (GPM)										
	0	5	10	15	20	25	30	35	40	45	50
20 PSI	18 GPM @ 20 PSI										
30 PSI	23 GPM @ 30 PSI										
40 PSI	27 GPM @ 40 PSI										
60 PSI	32 GPM @ 60 PSI										
80 PSI	37 GPM @ 80 PSI										
100 PSI	42 GPM @ 100 PSI										

NOTE: Most common 1/2 hp submersible pumps output is 10 GPM.

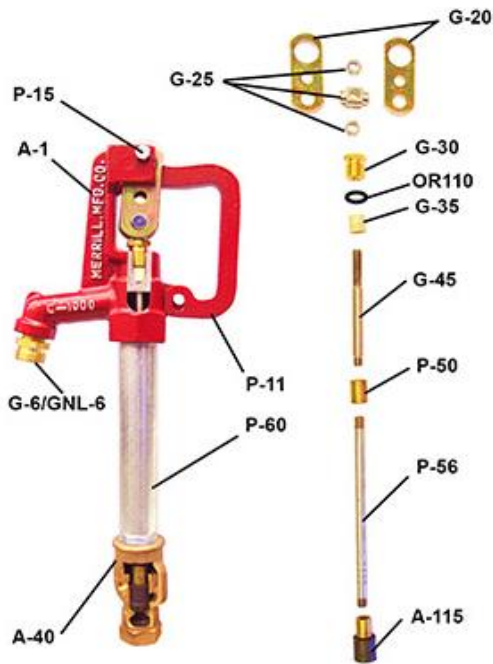


Sales Tax: Extra if applicable

*PRICE ON REQUEST

Prices subject to change without notice.

Make a Difference.



MERRILL C-1000 SERIES

FROSTPROOF YARD HYDRANT ACCESSORIES

PART #	MODEL	DESCRIPTION	PRICE
8269997	A-1	Head Casting	
	G-6	Hose Thread Adapter	
8350510	P-11	Lever Casting	
	G-15	Lever Bolt	
ZPAC0183	G-20	Draw Straps (per pair)	
ZPAC0260	G-25	Pivot Connector & Nuts	
ZPAC0031	G-30	Packing Nut	
ZPAC0313	G-35	Valve Stem Packing	
8129407	A-40	Valve Body	
ZPAC0024	G-45	Stainless Steel Rod	
ZPAC0184	P-50	Brass Reducer	
ZPAC1191	P-56	3/8" Operating Rod	
	P-60	1" Galvanized Pipe	
8452955	A-115	Plunger	
ZPAC1091	A-121	Head Assembly	
ZPAC0078	PKCF	Repair Kit	
	PKC	Repair Kit	

PKCF REPAIR KIT



MERRILL E-5000 HYDRANT KIT

PART #	MODEL	DESCRIPTION	PRICE
ZPAC1429	PKEFM	Repair Kit	

CLAYTON MARK YARD HYDRANT ACCESSORIES

PART #	MODEL	DESCRIPTION	PRICE
8340250	YRKI	Repair Kit #9175B	
ZPAC1126	2222AHNS	Clevis Rod	

PRESSURE TANKS
FLEX-CON

PART #	MODEL	TANK VOL.	USES TANK TEE	PRICE
8523020	BF2P20	20		
8523026	BF2P26	26		
8523032	BF2P32	32		
8523044	BF2P44	44		
8523065	BF2P65	65		
8523081	BF2P81	81		
8523085	BF2P85	85		
8523119	BF2P119	119		

WELL-X-TROL PRO ACCESS NON PA

PART #	MODEL	TANK VOL.	USES TANK TEE	PRICE
8525400	WX201	14		
8526300	WX202	20		
8526305	WX203	32		
8525901	WX250	44		
8526001	WX251	62		
8526201	WX302	86		
8526251	WX350	119		



PRESSURE TANKS

CHAMPION TANK

PART #	MODEL	TANK CONNECTION	TANK VOL.	USES TANK TEE	PRICE
8522275	CH20-CH4202	1" NPTF	20 Gal.	BATNL100 C	
8522325	CH32-CH8003	1" NPTF	32 Gal.	BATNL100 C	
8522375	CH44-CH10050	1-1/4" NPTF	44 Gal.	BATNL125X2	
8522475	CH62-CH12051	1-1/4" NPTF	62 Gal.	BATNL125X2	
8522525	CH86-CH17002	1-1/4" NPTF	86 Gal.	BATNL125X2	
8522575	CH119-CH22050	1-1/4" NPTF	119 Gal.	BATNL125X2	



WELLMATE FIBERGLASS TANKS

PART #	MODEL	TANK CONNECTION	TANK VOL	USES TANK TEE	PRICE
8526306	WM 6	1" MPTF	19.8	BATNL100QC	
8526307	WM 9	1" MPTF	29.5	BATNL100QC	
8526308	WM 12	1" MPTF	40.3	BATNL100QC	
8526309	WM14WB	1 1/4" MPTF	47	BATNL125QC	
8526310	WM 20	1-1/4" MPTF	60	BATNL125QC	
8526312	WM 25	1-1/4" MPTF	86.7	BATNL125QC	
8526313	WM 35	1-1/4" MPTF	119	BATNL125QC	



WELL-X-TROL PRO ACCESS

PART #	MODEL	TANK VOL.	USES TANK TEE	PRICE
8525100	WX-101	2 Gal		
8525200	WX-102	4.4 Gal		
8525300	WX-103	8.6 Gal		
8525600	WX-202PA	20 Gal	BATNL100 CS	
8525800	WX-203PA	32 Gal	BATNL100 CS	
8525850	WX-205PA	34 Gal	BATNL1252	
8525900	WX-250PA	44 Gal	BATNL1252	
8526000	WX-251PA	62 Gal	BATNL1252	
8526200	WX-302PA	86 Gal	BATNL1252	
8526250	WX-350PA	119 Gal	BATNL1252	



Make a Difference.

TANK ACCESSORIES

PRESSURE GUAGES 0-100 PSI

PART #	DESCRIPTION	MODEL	PRICE
8253700	2" WITH 1/4" BOTTOM CONNECTION	PGPNL100	
8254100	2" WITH 1/4" BACK CONNECTION	PGBNL10025	
8253800	2" WITH 1/4" BOTTOM CONNECTION LIQUID FILLED	PGLNL1002	

HOSE AND TUBING

PART #	DESCRIPTION	MODEL	PRICE
8275000	1/2" ID CLEAR BRAIDED HOSE	A1-11-008	
8275100	3/4" ID CLEAR BRAIDED HOSE	A1-11-012	
8275200	1" ID CLEAR BRAIDED HOSE	A1-11-016	
8275225	1 1/4" ID CLEAR BRAIDED HOSE	A1-11-020	

PRESSURE SWITCHES

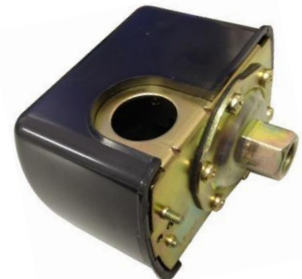
SQUARE 'D' FIG. 9013

PART #	DESCRIPTION	MODEL	Price
8516050	1/4" NPT FEM 30-50	FSG-2	
8516075	1/4" NPT FEM 40-60	FSG-2	
8516400	1/4" F NPT w/Loss of Prime Switch	FSG-2M4	
8516700	1/4" NPT FEM 80 - 100	GHG-2	
8516800	1/4" NPT FEM 40 - 60	GHG-2	



MERRILL PRESSURE SWITCHES

PART #	DESCRIPTION	SAME AS	PRICE
8516000	MPS3050 1/4" FEMALE SET 30/50	FSG-2	
8516005	MPS4060 1/4" FEMALE SET 40/60		
8516010	MPSM43050 1/4" FEMALE 30/50 LOW WATER CUT OFF	FSG2M4	



WELLMATE ACCESSORIES

PART #	DESCRIPTION	MODEL	Price
ZWWW1753	WELLMATE TANK CLIP	CH40576	

Sales Tax: Extra if applicable

*PRICE ON REQUEST

Prices subject to change without notice.

Make a Difference.

TANK TEE PACKAGES

PKG PART #	TEE	100# 2" Pressure Gauge	1/2" Boiler Drain	3/4" Boiler Drain	1/4" x 3" Brass Nipple	Switch	1/2" Relief Valve	3/4" Relief Valve	List Price Each
M8528787	BATNLI00CS 1" X 4.5"	√	√		√	√	√		
FITS - WX202PA, WX203PA									
M8528789	BATNL1252 1 1/4" X 4"	√		√	√	√		√	
FITS - WX205 PA, WX250 PA, WX251 PA, WX302 PA, WX350 PA									
M8528800	BATNL100C 1" X 11"	√	√		√	√	√		
FITS - CH20, CH32									
M8528870	BATNL1252XC 1 1/4" X 14"	√		√	√	√		√	
FITS - CH44, CH62, CH86, CH119									

UNION TANK TEE PACKAGES

PKG PART #	TEE	100# 2" Pressure Gauge	1/2" Boiler Drain	3/4" Boiler Drain	1/4" x 3" Brass Nipple	Switch	1/2" Relief Valve	3/4" Relief Valve	List Price Each
M8528810	BATNL1002UCS 1" X 5.5"	√	√		√	√	√		
FITS - WX202 PA, WX203 PA									
M8528820	BATNL1252UCS 1 1/4" X 5.5"	√		√	√	√		√	
FITS - WX205 PA, WX250 PA, WX251 PA, WX302 PA, WX350 PA									
M8528850	BATNL1002UC1" x 11"	√	√		√	√	√		
FITS - CH20, CH32									
M8528860	BATNL1252XUC 1 1/4" X 14"	√		√	√	√		√	
FITS - CH44, CH62, CH86, CH119									

WELLMATE TANK TEE PACKAGES

PKG PART #	TEE	100# 2" Pressure Gauge	1/2" Boiler Drain	3/4" Boiler Drain	1/4" x 3" Brass Nipple	Switch	1/2" Relief Valve	3/4" Relief Valve	List Price Each
M8528880	BATNL100QC	√	√		√	√	√		
FITS - WM6, WM9, WM12									
M8528882	BATNL125QC	√		√	√	√		√	
FITS - WM20, WM35									

ZILMET TANK PACKAGES

Part #	DESCRIPTION	Price
M8528840	1" Tee Package	
M8528845	1 1/4" Tee Package	

MERRILL TANK TEES - CROSSES

PART #	Model #	Female Tapping	Male Tapping	LEG Lgth	Female Top of Cross	Female Tapping on Side	Price
8528675	BATNL100CS	3/4"	1"	5"	2 x 1/2"	2 x 1/4"	
FITS - WX202 PA, WX203PA							
8528687	BATNL1252	1"	1 1/4"	4"	2 x 3/4"	2 x 1/4"	
FITS - WX205 PA, WX250 PA, WX251 PA, WX302 PA, WX350 PA							
8528679	BATNL100C	3/4"	1"	11"	2 x 1/2"	2 x 1/4"	
FITS - CH20, CH32							
8528689	BATNL1252XC	1"	1 1/4"	14"	2 x 3/4"	2 x 1/4"	
FITS - CH44, CH62, CH86, CH119							

TANK TEES WITH UNION

PART #	Model #	Female Tapping	Male Tapping	LEG Lgth	Female Top of Cross	Female Tapping on Side	Price
8528682	BATNL1002UC	3/4"	1"	11"	2 x 1/2"	2 x 1/4"	
FITS - CH20, CH32							
8528676	BATNL1002UCS	3/4"	1"	4"	2 x 1/2"	2 x 1/4"	
FITS - WX202 PA, WX203 PA							
8528685	BATNL1252XUC	1"	1 1/4"	14"	2 x 3/4"	2 x 1/4"	
FITS - CH44, CH62, CH86, CH119							
8528688	BATNL1252UCS	1"	1 1/4"	4"	2 x 3/4"	2 x 1/4"	
FITS - WX205 PA, WX250 PA, WX251 PA, WX302 PA, WX350 PA							

WELLMATE TANK TEES

PART #	Model #	Female Tapping	Male Tapping	LEG Lgth	Female Top of Cross	Female Tapping on Side	Price
8528698	BATNL125QC	1"	1 1/4"	4"	2 X 3/4"	2 X 1/4"	
FITS - WM14, WM20, WM35							
8528697	BATNL100QC	3/4"	1"	4"	2 X 1/2"	2 X 1/4"	
FITS - WM6, WM9							

ZILMET TANK TEES

PART #	Model #	Tee Connection	Female Tapping	Male Tapping	Female Top of Cross	Female Top of Cross	Price
8528683	BATNL1002UN	1" F	3/4"	1"	2 x 1/2"	2 x 1/4"	
FITS - ZHP202							
8528684	2-07TK54-SF-2UNL	1 1/4" F	3/4"	1"	2 x 1/2"	2 x 1/4"	
FITS - ZHP203, ZHP250							

WELL SEALS

DOUBLE PIPE - JET

PART #	MODEL	SIZE NPT	PRICE
8504400	JWS4X11/4X1	4" x 1 1/4" x 1"	
8504800	JWS5X11/4X1	5" x 1 1/4" x 1"	
8505300	JWS6X11/4X1	6" x 1 1/4" x 1"	
8505600	JWS61/4X11/4X1	6 1/4" x 1 1/4" x 1"	



Single



Double

SINGLE PIPE SUBMERSIBLE

PART #	MODEL	SIZE NPT	PRICE
8507200	SWS4X1	4" x 1"	
8507300	4X11/4SCH	4" x 1 1/4"	
8507450	41/4X1SCH	4 1/4" x 1"	
8507800	SWS5X1	5" x 1"	
8507900	SWS5X11/4	5" x 1 1/4"	
8508500	SWS6X1	6" x 1"	
8508600	SWS6X11/4	6" x 1 1/4"	
8509000	SWS61/4X1	6 1/4" x 1"	
8509100	SWS61/4X11/4	6 1/4" x 1 1/4"	
8508200	SWS61/4X2	6 1/4" X 2"	

INSTALLATION ACCESSORIES

MERRILL PITLESS ADAPTERS - ALL BRASS

PART #	MODEL	DESCRIPTION	WELL SUPPORT	WELL SIZE	PRICE
8103175	MBNL50	Single Pipe, 1"	300	5" - 8"	
8103180	MBNL225	Single Pipe, 1 1/4"	300	5" - 8"	
8103185	MBNL400	Double Pipe, 1" x 1 1/4"	N/A	5" - 8"	
8103190	MBNL300	Single Pipe, 2"	600	6" - 12"	
8103176	MBNL200	1" H.D. IMPORT	400	5" - 8"	
8103177	MBNL100	1" H.D. USA MADE	400	5" - 8"	



MARTINSON PITLESS ADAPTERS - ALL BRASS

PART #	MODEL	DESCRIPTION	WELL SIZE	PRICE
8103150	B300X	Single Pipe, 1"	5 9/16 - 7"	
8102400	B10X	Single Pipe, 1"	5" - 6"	

MAASS/DICKEN PITLESS ADAPTERS

PART #	MODEL	DESCRIPTION	PRICE
8102000	CW4-10	U Bolt Style For Steel Pipe #952040	
8102100	CW5-10	U Bolt Style For Steel Pipe #952050	
8102150	CW6-10	U Bolt Style For Steel Pipe #952060	
8102174	6J2	Weld On Style Model J #928135	
8103425	8J3	Weld On Style Model J #928145	
8103428	10J4	Weld On Style Model J #988150	



NOTE: WE ALSO DISTRIBUTE MAASS MODEL MB
 PITLESS UNITS FOR MUNICIPAL & INDUSTRIAL
 APPLICATIONS
 CONTACT US FOR INFORMATION & PRICING

Sales Tax: Extra if applicable

***PRICE ON REQUEST**

Prices subject to change without notice.

Make a Difference.



ALUMINUM WATERTIGHT CAPS			
--------------------------	--	--	--

PART #	SIZE	DESCRIPTION	PRICE
8154145	5 1/2"	Vented - 1" conduit	
8154150	6 5/8"	Vented - 1" conduit	
8154555	8 5/8"	Vented - 1 1/4" conduit	
8154159	10 5/8"	Vented - 1 1/4" conduit	



ALUMINUM LOCKING CAPS			
-----------------------	--	--	--

PART #	SIZE	DESCRIPTION	PRICE
8151870	4 1/2"	Locking	
8151871	5 1/2"	Locking	
8151872	6 5/8"	Locking	
8151875	8 3/4"	Locking	
8151880	10 3/4"	Locking	
8151881	12 3/4"	Locking	



ALUMINUM WATER TIGHT LOCKING CONDUIT CAPS			
---	--	--	--

PART #	SIZE	DESCRIPTION	PRICE
8151885	6 5/8"	1" Conduit	
8151886	8 3/4"	1 1/4" Conduit	
8151887	10 3/4"	1 1/4" Conduit	
8151889	12 3/4"	1 1/4" Conduit	



TORQUE ARRESTORS			
------------------	--	--	--

PART #	MODEL	DESCRIPTION	PRICE
8103825	STA-48C	4" To 8"	

ROPE HANGERS		
--------------	--	--

PART #	DESCRIPTION	PRICE
8268506	6" & 6 1/4" Casing	

CABLE GUARDS			
--------------	--	--	--

PART #	MODEL	DESCRIPTION	PRICE
8151200	CG-6	Slip On	
8151250	CG-100	Clip On	

Sales Tax: Extra if applicable

*PRICE ON REQUEST

Prices subject to change without notice.

IPEX POLY

"C.S.A. 75 POLY PIPE RED STRIPE"	"C.S.A. 100 POLY PIPE GREEN STRIPE"
---	--

SIZE	Length	100'	400'	3000'	SIZE	Length	100'	400'	3000'
1/2"	Length	100'	400'	3000'	1/2"	Length	100'	400'	3000'
	Part number	4197500	4198001			Part number	4205500	4206001	
	Price					Price			
3/4"	Length	100'	400'	2500'	3/4"	Length	100'	400'	2500'
	Part number	4198750	4199001			Part number	4206750	4207001	
	Price					Price			
1"	Length	100'	300'	1500'	1"	Length	100'	300'	1500'
	Part number	4199750	4200001	4200100		Part number	4207750	4208001	4208400
	Price					Price			
1 1/4"	Length	100'	300'	1000'	1 1/4"	Length	100'	300'	1000'
	Part number	4200400	4200501	4200550		Part number	4208500	4209001	4209250
	Price					Price			
1 1/2"	Length	100'	250'	900'	1 1/2"	Length	100'	200'	900'
	Part number	4200900	4202000			Part number	4210100	4210200	4210250
	Price					Price			
2"	Length	100'	200'	500'	2"	Length	100'	150'	
	Part number	4202900	4202950			Part number	4211001	4211002	
	Price					Price			



POLY PIPE CUTTER

3620000	CUTS PIPE UP TO 1 1/4"	
3620001	RATCHET STYLE CUTS PIPE UP TO 1 1/4"	
3620002	CUTS PIPE UP TO 2"	

Sales Tax: Extra if applicable

*PRICE ON REQUEST

Prices subject to change without notice.

TRINUS POLY

"C.S.A. 75 POLY PIPE RED STRIPE"	"C.S.A. 100 POLY PIPE GREEN STRIPE"
---	--

SIZE	Length	100'	400'	3000'	SIZE	Length	100'	400'	3000'
1/2"	Length	100'	400'	3000'	1/2"	Length	100'	400'	3000'
	Part number	4197500T	4198001T			Part number	4205500T	4206001T	
	Price					Price			
3/4"	Length	100'	400'	2500'	3/4"	Length	100'	400'	2500'
	Part number	4198750T	4199001T			Part number	4206750T	4207001T	420700T
	Price					Price			
1"	Length	100'	300'	1500'	1"	Length	100'	300'	1500'
	Part number	4199750T	4200001T	4200100T		Part number	4207750T	4208001T	4208400T
	Price					Price			
1 1/4"	Length	100'	300'	1000	1 1/4"	Length	100'	300'	1000'
	Part number	4200400T	4200501T	4200550T		Part number	4208500T	4209001T	4209250T
	Price					Price			
1 1/2"	Length	100	250	900	1 1/2"	Length	100'	200'	900'
	Part number	4200900T	4202000T			Part number	4210100T	4210200T	4210250T
	Price					Price			
2"	Length	100	200	500	2"	Length	100'	150'	500'
	Part number	4202900T	4202950T			Part number	4211001T	4211002T	4211003T
	Price					Price			

"C.S.A. 100 BLUE POLY PIPE"

SIZE	Length	100'	300'	1500'
1"	Length	100'	300'	1500'
	Part number	4207800	4207850	4207900
	Price			
1" 160# AND 200# ALSO AVAILABLE				

Sales Tax: Extra if applicable

**PRICE ON REQUEST*

Prices subject to change without notice.

Make a Difference.

NYLON AND GALVANIZED FITTINGS
INSERT ADAPTER
NYLON

SIZE	PART #	PRICE
1/2"	7250200	
3/4"	7250210	
1"	7250220	
1 1/4"	7250230	
1 1/2"	7250240	
2"	7250250	
2 1/2"		
3"		

COUPLING
NYLON

SIZE	PART #	PRICE
1/2"	7254200	
3/4"	7254210	
1"	7254220	
1 1/4"	7254230	
1 1/2"	7250240	
2"	7254250	

TEES
INSERT NYLON

SIZE	PART #	PRICE
1/2"	7258205	
3/4"	7258210	
1"	7258220	
1 1/4"	7258230	
1 1/2"	7258240	
2"	7258250	

ELBOWS
INSERT NYLON

SIZE	PART #	PRICE
1/2"	7255200	
3/4"	7255210	
1"	7255220	
1 1/4"	7255230	
1 1/2"	7255240	
2"	7255250	

INSERT ADAPTER
GALVANIZED

SIZE	PART #	PRICE
1/2"	7250400	
3/4"	7250410	
1"	7250420	
1 1/4"	7250430	
1 1/2"	7250440	
2"	7250450	
2 1/2"		
3"	7250460	

COUPLING
INSERT GALVANIZED

SIZE	PART #	PRICE
1/2"	7254400	
3/4"	7254410	
1"	7254420	
1 1/4"	7254430	
1 1/2"	7254440	
2"	7254450	

CLAMPS
STAINLES STEEL

SIZE	OEM #	PART #	PRICE
1/4"	SS4	7253000	
1/2"	SS8	7253060	
5/8"	SS10	7253080	
3/4"	SS12	7253090	
1"	SS16	7253100	
1 1/4"	SS20	7253110	
1 1/2"	SS24	7253120	
2"	SS32	7253140	
2 1/4"	SS36	7253145	
2 1/2"	SS40	7253150	
3 1/2"	SS56	7253158	
4"	SS64	7253160	
4 1/2"	SS72	7253165	
5 1/2"	SS88	7253170	
6 1/2"	SS104	7253175	
8 3/4"	SS140	7253190	



Sales Tax: Extra if applicable

*PRICE ON REQUEST

Prices subject to change without notice.

Make a Difference.

BRASS INSERT FITTINGS
MALE ADAPTERS REG

PART #	DESCRIPTION	PRICE
8100150	3/4" NPT x 3/4" POLY	
8100100	1" NPT x 1" POLY	
8100200	1 1/4" NPT X 1 1/4" POLY	
8100205	1 1/2" NPT x 1 1/2" POLY	
8100210	2" NPT x 2" POLY	

MALE ADAPTERS X.L.

PART #	DESCRIPTION	PRICE
8100300	1" NPT x 1" POLY	
8100400	1 1/4" NPT x 1 1/4" POLY	
8100129	1 1/4" NPT X 1" POLY XL	


FEMALE ADAPTERS

PART #	DESCRIPTION	PRICE
8100420	3/4" FPT x 3/4" POLY	
8100425	1" FPT x 1" POLY	
8100430	1 1/4" FPT x 1 1/4" POLY	

REDUCING ADAPTERS

PART #	DESCRIPTION	PRICE
8100155	3/4" NPT x 1" POLY	
8100125	1" NPT X 1 1/4" POLY REG	
8100127	1 1/4" NPT x 1" POLY REG	

COUPLINGS

PART #	DESCRIPTION	PRICE
8160090	3/4" POLY	
8160100	1" POLY	
8160150	1 1/4" POLY	
8160155	1 1/2" POLY	
8160160	2" POLY	
8160170	1 1/4" POLY X 1" POLY	

TEES

PART #	DESCRIPTION	PRICE
8211045	3/4" POLY	
8211050	1" POLY	
8211052	1 1/4" POLY	
8211054	3/4" P X 3/4" P X 3/4" NPT	
8211053	1" P x 1" P x 3/4" NPT	

ELBOWS INS X INS

PART #	DESCRIPTION	PRICE
8211029	3/4" POLY x 3/4" POLY	
8211030	1" POLY x 1" POLY	
8211055	1 1/4" POLY X 1 1/4" POLY	

ELBOWS INS X NPT

PART #	DESCRIPTION	PRICE
8211037	3/4" NPT x 3/4" POLY	
8211035	3/4" NPT x 1" POLY	
8211040	1" NPT X 1" POLY	

MISCELLANEOUS ITEMS

PART #	DESCRIPTION	PRICE
8100700	Rope Adapters, 1" NPT x 1" POLY	



Sales Tax: Extra if applicable

*PRICE ON REQUEST

Prices subject to change without notice.

Make a Difference.



VALVES

SIMMONS - BRASS FOOT - NO LEAD

PART	SIZE	DESCRIPTION	PRICE
8554150	3/4"	452SB	
8554120	1"	453SB	
8554140	1 1/4"	454SB	
8554160	1 1/2"	456SB	
8554170	2"	457SB	
8554180	2 1/2"	458SB	
8554190	3"	459SB	
8554200	4"	460SB	

MERRILL - BRASS FOOT - NO LEAD

PART #	SIZE	DESCRIPTION	PRICE
8554122	1/2"	FVNL50	
8554123	3/4"	FVNL75	
8554125	1"	FVNL100	
8554145	1 1/4"	FVNL125	
8554146	1 1/2"	FVNL150	
8554147	2"	FVNL200	



PRESSURE RELIEF VALVES

PART #	SIZE	DESCRIPTION	PRICE
8554400	1/2"	75 P.S.I.	
8554500	3/4"	75 P.S.I.	

SNIFTER VALVES

PART #	DESCRIPTION	PRICE
8553300	1/8" NPT Air Valve	
8553400	1/4" NPT Air Valve	



Sales Tax: Extra if applicable

* PRICE ON REQUEST

Prices subject to change without notice.

Make a Difference.

VERTICAL CHECK VALVES
SIMMONS - BRASS

PART	SIZE	DESCRIPTION	PRICE
8553710	3/4" F x F	502SB	
8553720	1" F x F	503SB	
8553740	1 1/4" F x F	504SB	
8553750	1 1/2" F x F	505SB	
8553760	2" F x F	506SB	
8553900	3" F x F	508SB	
8553950	4" F x F	509SB	
8553960	5" F x F	510SB	
8553985	6" F x F	511SB	


MERRILL - BRASS

PART	SIZE	DESCRIPTION	PRICE
8553723	1/2" F x F	CVNL50	
8553725	3/4" F x F	CVNL75	
8553730	1" F x F	CVNL100	
8553735	1 1/4" F x F	CVNL125	
8553736	1 1/2" F x F	CVNL150	
8553737	2" F x F	CVNL200	
8553738	3" F x F	CVNL300	
8553739	4" F x F	CVNL400	

MERRILL - STAINLESS STEEL

PART	SIZE	MODEL	PRICE
8553969	1" F x F	CVS 100	
8553970	1 1/4" F x F	CVS 125	
8553974	2" F x F	CVS 200	
8553976	3" F x F	CVS 300	
8553978	4" F x F	CVS 400	
8553707	1 1/4" x 1" M x F	CVMS 1025	


SUBMERSIBLE CHECK VALVES

PART	SIZE	MODEL	PRICE
8552970	1 1/4" M x 1" F	CVMNL125	
8553705	1 1/4" M x 1 1/4" F		
8552980	2" M x 2" F	622SB	

Sales Tax: Extra if applicable

* PRICE ON REQUEST

Prices subject to change without notice.

DOLE FLOW VALVES

MODEL GC

PART #	SIZE - NPT	G.P.M.	PRICE
8555312	3/4"	1.0	
8555316	3/4"	1.5	
8555320	3/4"	2.0	
8555328	3/4"	2.5	
8555332	3/4"	3.0	
8555338	3/4"	3.5	
8555344	3/4"	4.0	
8555349	3/4"	4.5	
8555352	3/4"	5.0	
8555360	3/4"	6.0	
8555368	3/4"	7.0	
8555376	3/4"	8.0	
8555382	3/4"	9.0	
8555384	3/4"	10.0	

MODEL GX

PART #	SIZE - NPT	G.P.M.	PRICE
8555324	1"	2.0	
8555330	1"	2.5	
8555336	1"	3.0	
8555339	1"	3.5	
8555348	1"	4.0	
8555356	1"	5.0	
8555364	1"	6.0	
8555372	1"	7.0	
8555380	1"	8.0	
8555388	1"	10.0	
8555390	1"	15	



Sales Tax: Extra if applicable

* PRICE ON REQUEST

Prices subject to change without notice.

Make a Difference.

VALVES
BRONZE GATE

PART #	DESCRIPTION	PRICE
5270000	1/4" NPT	
5270002	3/8" NPT	
5270003	1/2" NPT	
5270010	3/4" NPT	
5270012	1" NPT	
5270013	1 1/4" NPT	
5270014	1 1/2" NPT	
5270015	2" NPT	
5270016	2 1/2" NPT	
5270017	3" NPT	
5270018	4" NPT	


K.V.C. BRASS BALL VALVES - NO LEAD

PART #	DESCRIPTION	PRICE
5262056NL	1/4 NPT F x F FULL PORT	
5262057NL	3/8 NPT F x F FULL PORT	
5262070NL	1/2" NPT F x F FULL PORT	
5262075NL	3/4" NPT F x F FULL PORT	
5262080NL	1" NPT F x F FULL PORT	
5262082NL	1 1/4 NPT F x F FULL PORT	


K.V.C. BRASS BALL VALVES

PART #	DESCRIPTION	PRICE
5262070	1/2" NPT F x F FULL PORT	
5262075	3/4" NPT F x F FULL PORT	
5262080	1" NPT F x F FULL PORT	
5262082	1 1/4" NPT F x F FULL PORT	
5262084	1 1/2" NPT F x F FULL PORT	
5262086	2" NPT F x F FULL PORT	
5262088	3" NPT F x F FULL PORT	
5262090	4" NPT F x F FULL PORT	


FLOAT VALVE ASSEMBLY

PART #	DESCRIPTION	PRICE
3705020	BRASS C/W - 5" PLASTIC BALL WITH S/S ROD	

UNDERGROUND CURB STOP AND DRAIN

PART #	DESCRIPTION	PRICE
8551200	3/4" F x F	
8551250	1" F x F	

SEDIMENT FAUCETS

PART #	DESCRIPTION	PRICE	PART #	DESCRIPTION	PRICE
5450000	1/2" NPT		5450200	3/4" NPT	

Sales Tax: Extra if applicable * PRICE ON REQUEST Prices subject to change without notice.

Make a Difference.



JOHNSON STAINLESS STEEL DRIVE POINTS

PART #	DESCRIPTION	SIZE	PRICE
8455800	1 1/4" x 24" x 30"	# 6	
8455900	1 1/4" x 24" x 30"	#10	
8456200	1 1/4" x 36" x 42"	# 6	
8456300	1 1/4" x 36" x 42"	# 8	
8456400	1 1/4" x 36" x 42"	#10	
8457000	1 1/4" x 48" x 54"	# 6	
8457100	1 1/4" x 48" x 54"	# 8	
8457200	1 1/4" x 48" x 54"	#10	
8457700	2" x 36" x 42"	# 6	
8457800	2" x 36" x 42"	#10	
8457900	2" x 48" x 54"	# 6	
8458000	2" x 48" x 54"	#10	
8200803	2" x 48" Extension M X F	#10	
8200808	2" x 60" Extension M X F	#10	

MERRILL S/S DRIVE POINTS

PART #	DESCRIPTION	SIZE	PRICE
8457640	1 1/4" x 18" x 24"	60 GA	
8457678	1 1/4" x 24" x 30"	60 GA	
8457680	1 1/4" x 30" x 36"	60 GA	
8457685	1 1/4" x 36" x 48"	60 GA	
8457650	1 1/4" x 18" x 24"	80 GA	
8457675	1 1/4" x 24" x 30"	80 GA	
8457679	1 1/4" x 30" x 36"	80 GA	
8457895	1 1/4" x 36" x 48"	80 GA	
8458110	2" x 24" x 30"	60 GA	
8458115	2" x 30" x 36"	60 GA	
8458120	2" x 24" x 30"	80 GA	
8458125	2" x 30" x 36"	80 GA	

BRADY PVC POINTS

PART #	DESCRIPTION	SIZE	PRICE
8458130	1 1/4" x 30" X 36"	#10	

Sales Tax: Extra if applicable

*PRICE ON REQUEST

Prices subject to change without notice.

Make a Difference.

JOHNSON s/s TELESCOPIC SCREENS F x F

SIZE	PRICE	SLOT #4	SLOT #6	SLOT #8	SLOT #10	SLOT #12
4" x 3' 3" NPT		SLOT #4 2066000	SLOT #6 2067000	SLOT #8 2068000	SLOT #10 2069000	SLOT #12 2070000
		SLOT #14 2071000	SLOT #16 2072000	SLOT #18 2073000	SLOT #20 2074000	SLOT #25 2075000
		SLOT #30	SLOT #35	SLOT #40	SLOT #45	SLOT #50

SIZE	PRICE	SLOT #4	SLOT #6	SLOT #8	SLOT #10	SLOT #12
4" x 4' 3" NPT		SLOT #4 2081000	SLOT #6 2082000	SLOT #8 2083000	SLOT #10 2084000	SLOT #12 2085000
		SLOT #14 2086000	SLOT #16 2087000	SLOT #18 2088000	SLOT #20 2089000	SLOT #25 2090000
		SLOT #30	SLOT #35	SLOT #40	SLOT #45	SLOT #50

SIZE	PRICE	SLOT #4	SLOT #6	SLOT #8	SLOT #10	SLOT #12
4" x 5' 3" NPT		SLOT #4	SLOT #6 2096000	SLOT #8	SLOT #10 2099000	SLOT #12 2100000
		SLOT #14 2101000	SLOT #16	SLOT #18	SLOT #20	SLOT #25 2105000
		SLOT #30	SLOT #35	SLOT #40	SLOT #45	SLOT #50

SIZE	PRICE	SLOT #4	SLOT #6	SLOT #8	SLOT #10	SLOT #12
5" x 3' 4" NPT		SLOT #4	SLOT #6 2127000	SLOT #8 2128000	SLOT #10 2129000	SLOT #12 2130000
		SLOT #14 2131000	SLOT #16 2133000	SLOT #18 2134000	SLOT #20 2135000	SLOT #25 2136000
		SLOT #30 2137000	SLOT #35 2138000	SLOT #40 2139000	SLOT #45 2140000	SLOT #50

SIZE	PRICE	SLOT #4	SLOT #6	SLOT #8	SLOT #10	SLOT #12
5" x 4' 4" NPT		SLOT #4	SLOT #6 2143000	SLOT #8 2144000	SLOT #10 2145000	SLOT #12 2146000
		SLOT #14 2147000	SLOT #16 2148000	SLOT #18 2149000	SLOT #20 2150000	SLOT #25 2151000
		SLOT #30 2152000	SLOT #35 2153000	SLOT #40 2154000	SLOT #45	SLOT #50

SIZE	PRICE	SLOT #4	SLOT #6	SLOT #8	SLOT #10	SLOT #12
5" x 5' 4" NPT		SLOT #4	SLOT #6 2158000	SLOT #8 2159000	SLOT #10 2160000	SLOT #12 2161000
		SLOT #14 2162000	SLOT #16 2163000	SLOT #18 2164000	SLOT #20 2165000	SLOT #25 2166000
		SLOT #30	SLOT #35	SLOT #40 2180000	SLOT #45	SLOT #50

Sales Tax: Extra if applicable

* PRICE ON REQUEST

Prices subject to change without notice.

Make a Difference.

JOHNSON s/s TELESCOPIC SCREENS F x F

SIZE	PRICE	SLOT #	SLOT #	SLOT #	SLOT #	SLOT #
6" x 3'		SLOT #4 2187000	SLOT #6 2188000	SLOT #8 2189000	SLOT #10 2190000	SLOT #12 2191000
		SLOT #14 2192000	SLOT #16 2193000	SLOT #18 2194000	SLOT #20 2195000	SLOT #25 2196000
5" NPT		SLOT #30 2197000	SLOT #35 2198000	SLOT #40 2199000	SLOT #45 2199200	SLOT #50 2199300

SIZE	PRICE	SLOT #	SLOT #	SLOT #	SLOT #	SLOT #
6" x 4'		SLOT #4 2202000	SLOT #6 2203000	SLOT #8 2204000	SLOT #10 2205000	SLOT #12 2206000
		SLOT #14 2207000	SLOT #16 2208000	SLOT #18 2209000	SLOT #20 2210000	SLOT #25 2211000
5" NPT		SLOT #30 2212000	SLOT #35 2213000	SLOT #40 2214000	SLOT #45 2214010	SLOT #50 2214015

SIZE	PRICE	SLOT #	SLOT #	SLOT #	SLOT #	SLOT #
6" x 5'		SLOT #4	SLOT #6 2218000	SLOT #8	SLOT #10 2220000	SLOT #12 2221000
		SLOT #14 2222000	SLOT #16 2223000	SLOT #18 2224000	SLOT #20 2225000	SLOT #25
5" NPT		SLOT #30	SLOT #35	SLOT #40 2229000	SLOT #45	SLOT #50

SIZE	PRICE	SLOT #	SLOT #	SLOT #	SLOT #	SLOT #
6" x 6' 5" NPT		SLOT #4 2230000	SLOT #6 2230100	SLOT #8 2230200	SLOT #10 2230300	

PIPE SIZE

SIZE	PRICE	SLOT #	SLOT #	SLOT #	SLOT #	SLOT #
6" x 4' 600' SETTING 6" NPT		SLOT #10 2235060	SLOT #14 2235062	SLOT #18 2235066		

Figure "K" Packer

SIZE	PART #	PRICE
4 1/4" x 3"	2238500	
5 1/8" x 4"	2240000	
6 1/4" x 4"	2242500	
6 1/4" x 5"	2242000	
8" x 6"	2243135	
8 1/4" x 6"	2243137	

Sales Tax: Extra if applicable

* PRICE ON REQUEST

Prices subject to change without notice.

"SCREEN NIPPLES"					
PIPE SIZE					
4" DIA	LENGTH	2'	3'	4'	5'
	PART #	M4076125D	M4076135D	M4076145D	M4076155D
	T.B.E. PRICE				
PIPE SIZE					
5" DIA	LENGTH	2'	3'	4'	5'
	PART #	M4076215D	M4076225D	M4076235D	M4076240D
	T.B.E. PRICE				
PIPE SIZE					
6" DIA	LENGTH	2'	3'	4'	5'
	PART #	M4076305D	M4076310D	M4076315D	
	T.B.E. PRICE				

PLUGS		
PART #	DESCRIPTION	PRICE
7008300	3" NPT BLACK SQ HD CORED	
7008320	4" NPT BLACK SQ HD CORED	
7008330	5" NPT BLACK BAR HEAD	
7008340	6" NPT BLACK BAR HEAD	

PLUGS		
PART #	DESCRIPTION	PRICE
M7008335	5" WELLMASTER PLUG	

NIPPLES		
PART #	DESCRIPTION	PRICE
7007601	3" x Close Black	
M7007681D	4" x Close Black	
M7007721D	5" x Close Black	
M7007731	6" x Close Black	
7208481	4" x Close Galvanized	

NIPPLES - STAINLESS STEEL		
PART #	DESCRIPTION	PRICE
M7007685	4" Close Stainless Steel	
M7007725	5" Close Stainless Steel	
M7007735	6" Close Stainless Steel	

Make a Difference.

DRIVE SHOES

PART #	DESCRIPTION	O.D.	PRICE
M5005400TUFF	5 1/2" x 5 Reg. Weld On .244 Wall	6.050"	
M5005500TUFF	5 1/2" x 5 Reg. 8RD THD .244 Wall	6.050"	
M5007200TUFF	5 1/2" x 5 3/16" Cable Tool Weld On	6.050"	
M5007300TUFF	5 1/2" x 5 3/16" Cable Tool 8RD THD	6.050"	
M5010200TUFF	6 5/8" x 6 1/4" Cable Tool W/O 5 1/2" Long	7.390"	
M5010225TUFF	6 5/8" x 6 1/4" Cable Tool W/O 4" Long	7.390"	
M5010401	6 5/8" x 6 1/4" Rotary 8RD THD	7.390"	
M5010700TUFF	6 5/8" x 6 1/4" Rotary W/O	7.390"	
M5011410TUFF	6 5/8" x 6 1/4" Rotary W/O 4" Long	7.390"	
M5013900TUFF	8 5/8" x 8 1/4" Cable Tool Weld On	9.625"	
M5011821	6 5/8" - 28 Carbide Inserts		

BUDGET DRIVE SHOE (NOT HARDENED)

PART #	DESCRIPTION	SHOE O.D.	PRICE
M5010250	6 5/8" x 6 1/4" Cable Tool Budget L.P.	7.000"	
M5010750	6 5/8" x 6 1/4" Rotary Budget L.P.	7.000"	
M5010780	6 5/8" Cable Tool W/O H.P. Budget	7.625"	

WELD RINGS

PART #	DESCRIPTION	O.D.	PRICE
M3428061	4 1/2" X 4"	5.00"	
M4506250	5 1/2" x 4"	6.050"	
M4506252	5 9/16" X 4" LG	6.050"	
M4506400	6 5/8" x 2 1/4" (W/LIP)	7.000"	
M4506416	6 5/8" X 2 1/4" (NO LIP)	7.000"	
M4507000	8 5/8" X 5" X 9.45" O.D.	9.625"	
M4508000	10 3/4" x 4" x 11.75" O.D.	11.75"	

COUPLINGS SLIP ON X 8RD THD

PART #	DESCRIPTION	PRICE
M3428475D	4 1/2" SLIP ON X 8 RD THD	
M3429402D	5 1/2" SLIP ON X 8 RD THD	
M3432475D	8 5/8" SLIP ON X 8 RD THD	
M3436325D	10 3/4" SLIP ON X 8 RD THD	

WELL EXTENSION COUPLING

PART #	DESCRIPTION	PRICE
M3448011G	6" PRESS X PRESS 12" LONG	



Make a Difference.

MUD PUMP PARTS
RODS AND PISTONS
FAILING FM 45 5" X 6 1/4"
FOR :
GARDNER DENVER FG-FXG 5" X 6"

PART #	FAILING #	DESCRIPTION	PRICE
4410550	XGD-21-FXG-183	Piston Rod(GD-1)	
4410600	D-2780-A	Piston Rod (API-1)	
4410140	F-918-F	Piston Assy. (GD-1)	
4410145	F-1070	Piston Assy. (API-1)	
4409200	156F383	Piston Rubber Repair Kit	
4408400	1FXG840	Piston Rod Baffle	
4410350	D-2561-1	1 13/16" Rubber Crown Rings	
4410400	FG-317	Junk Ring	
4410250	F1071	Piston Body	
4410100	10-16	Rod Packing	

PUMP LINER
FAILING FM 45 5" X 6 1/4"
FOR :
GARDNER DENVER FG-FXG 5" X 6"

PART #	FAILING #	DESCRIPTION	PRICE
4409275	D-1825-CR	Chrome Liner 5"	
4409300	D-1825	Plain Liner 5"	
4410000	D-1826	Liner Sleeve 1 1/2"	
4409990	XGD-25-T-27	Liner Sleeve 1"	

VALVE SPRINGS, STUDS, NUTS & GASKETS

PART #	FAILING #	DESCRIPTION	PRICE
4411900	XGD-78-A171	Steel Spring (6G62B)	
4411910	L146	Brass Spring	
4411930	100F679	Pump Stud	
4409310	16C-NH	Stud Nut	
4408650	100F690	Valve Cover Gasket	
4408700	100F688	Cylinder Head Gasket	

Make a Difference.

MUD PUMP PARTS
REGULAR SLUSH
VALVE FOR:
FAILING FM 45 5" x 6 1/4"
GARDNER DENVER FG-FXG 5" x 6"
GARDNER DENVER FD-FXX 5" x 8"

PART #	FAILING #	DESCRIPTION	PRICE
	XGD-5-FF-156	Cap Screen	
	F-929	Steel Washer	
4408610	XGD-1-FG-452	Rubber Insert	
	FG-206-H	Valve Body	
4411805	FG-39-H	Valve Seat	
4410130	F-395	Valve Assembly	

GRAVEL VALVES
FOR:
FAILING FM 45 5" x 6 1/4"
GARDNER DENVER FG-FXG 5" x 6"
GARDNER DENVER FD-FXX 5" x 8"

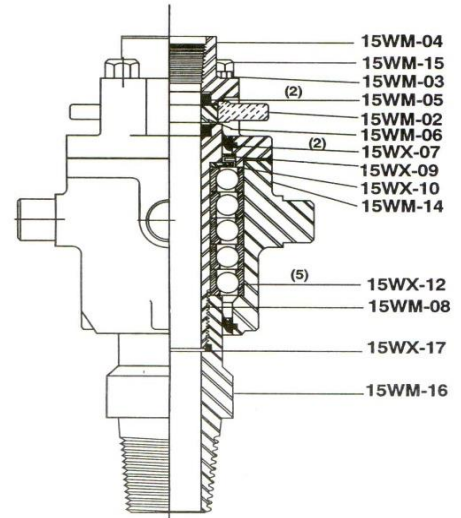
PART #	FAILING #	DESCRIPTION	PRICE
	101 F 862	Valve Body	
	101 F 863	Steel Washer	
4408600	101 F 864	Rubber Insert	
4411806	F-993	Valve Seat	
4410135	101 F 861	Valve Assembly	
	101 F 865	Bolt	

5 1/2" x 8" MUD PUMP PARTS

PART #	FAILING #	DESCRIPTION	PRICE
4410610		Rod API-3 SEF-183	
4410405		Junk Rink, Brass BC317	
4409302		Liner FD45655	
4410160		Piston Comp't API-3 204TBB045A	
4410005		Packing, Liner 25T32	
4410110		Packing,Rod 21/2 x 11/2	
4409220		Repair Kit, Piston TBB76013	

SWIVEL PARTS

PART #	KING #	DESCRIPTION	PRICE
5151100	10XV-06	WEAR BUSHING	
5151115	10KM-06	WEAR BUSHING	
5151120	15KM-06	WEAR BUSHING	
5151125	15XV-06	WEAR BUSHING	
5151130	2J-04	WEAR BUSHING	
5151133	2WM-06	WEAR BUSHING	
5151155	10KM-05	PACKING RING	
5151160	15KM-05	PACKING RING	
5151175	10XV-05	PACKING RING	
5151221	15XV-05	PACKING RING	
5151223	20XV-05	PACKING RING	
5151227	2J-03	PACKING RING	
5151228	2WM-02	PACKING RING	
5151230	147732	F/GD RING PACKING	
5151250	169056	WEAR RING	
5151300	15XV-17	SPINDLE THREAD SEAL	



RUBBER SHALE TRAPS

PART #	DESCRIPTION	PRICE
5229000	4 1/2" X 6"	
5229200	5" X 8"	
5230000	6" X 10 1/2"	



Sales Tax: Extra if applicable

* PRICE ON REQUEST

Prices subject to change without notice.

RETIP & RERUN ROTARY BITS
STEEL TOOTH TRICONE

PART #	SIZE	FORMATION	PIN SIZE	PRICE
3053920	6 1/8"	RETIPPED	3 1/2" API	
3054210	6 1/4"		3 1/2" API	
3054250	6 3/4"		3 1/2" API	
3051600	7 7/8"		4 1/2" API	
3051575	7 7/8"		3 1/2" API	
3051700	8 1/2"		4 1/2" API	
3051750	8 3/4"		4 1/2" API	
3051800	9 7/8"		6 5/8" API	
3051900	12 1/4"		6 5/8" API	

**RERUN CARBIDE BUTTON
TRICONE ROTARY BITS**
CHIZEL TOOTH

PART #	SIZE	FORMATION	PIN SIZE	PRICE
3053930	6 1/8"		3 1/2" API	
3054220	6 1/4"		3 1/2" API	
3054260	6 3/4"		3 1/2" API	
3153432	7 7/8"		4 1/2" API	
3153435	8 1/2"		4 1/2" API	
3153440	8 3/4"		4 1/4" API	
3153450	9 7/8"		6 5/8" API	
	12 1/4"		6 5/8" API	

CABLE TOOL BITS

PART #	SIZE	API PIN	MODEL	PRICE
3049040	5"	1 5/8" x 2 5/8"	RAMPP	
3049400	6 1/8"	2" x 3"	RAMPP	
3049950	6 1/8"	2 1/4" x 3 1/4"	RAMPP	

BITS

PART #	SIZE	API PIN	MODEL	PRICE
3051960	5"	2 7/8 API	T 1 HARD	
3051970	5"	2 7/8 API	T 2 MED HARD	
3051975	3 7/8"	2 3/8 API	SE 56	
ZWWW0470	5"	2 7/8 API	SE 56	
ZWWW0837	6 1/8"	3 1/2 API	PDC 6 WING	

Make a Difference.

NOVO HIGH EFFICIENCY SOFTENER SERIES 485

PART #	MODEL	DESCRIPTION	PRICE
8528975	NVO485HE-75	NOVO SERIES 485 HE TWIN TANK	
8528976	NVO485HE-100	NOVO SERIES 485 HE TWIN TANK	
8528977	NVO485HE-150	NOVO SERIES 485 HE TWIN TANK	
8528961	NVO485HE-75C	NOVO SERIES 485 HE CABINET	
8528962	NVO485HE-100C	NOVO SERIES 485 HE CABINET	

NOVO SOFTENER/ IRON FILTER

PART #	MODEL	DESCRIPTION	PRICE
ZPAC2120	NOV485	SIM-100 SOFT/IRON/MANG	
	NOV485	SIM-150 SOFT/IRON/MANG	

NOVO CHEMICAL FREE IRON FILTER 465

PART #	MODEL	DESCRIPTION	PRICE
8529017	NOV465	BIF 100 TWO TANK SYSTEM	
8529014	NOV465	BIF 150 TWO TANK SYSTEM	
ZPAC1290	NOV465	BIFMN - 100 - 15050071	
ZPAC1394	NOV465	BIFMN - 150 - 15050072	

NOVO WHOLE HOUSE FILTER (AUTO)

PART #	MODEL	DESCRIPTION	PRICE
	NVO 485T0-75	CARBON TASTE & ODOUR	
ZPAC1344	NVO 485T0-100	CARBON TASTE & ODOUR	
	NVO 485MM-75	MULTI - MEDIA	
	NVO 485MM-100	MULTI - MEDIA	
ZPAC1281	NVO 485NU-75	NEUTRALIZING	
8529020	NVO 465NU-100	NEUTRALIZING	
ZPAC2028	NVO 485 Simtan Plus-150	SOFTNER, IRON, MAGANESE, TANNIN, COLOUR	
ZPAC2058	NVO 485 Simtan Plus-250	SOFTNER, IRON, MAGANESE, TANNIN, COLOUR	

NOVO REVERSE OSMOSIS SYSTEMS

PART #	MODEL	DESCRIPTION	PRICE
ZPAC1371	475 PRO SERIES	4 STAGE QUICK CONNECT 20010023	
ZPAC9685	RO 75	R/O 75 ECONOMY 5 STAGE 20010073	

Make a Difference.

ULTRA VIOLET STERILIZERS
TROJAN MAX

PART #	MODEL	DESCRIPTION	PRICE
8513746	650694R	U.V. MAX D4 12 GPM	
8513748	650682	U.V. MAX E4 22 GPM	
8513750	650687	U.V. MAX F4+ 36 GPM	
8513755	VH200-F10	U.V. FILTER SYSTEM	

R CAN STERILIGHT

PART #	MODEL	DESCRIPTION	PRICE
	S5Q-PA - 5GPM	304S/S CHAMBER QUARTZ SLEEVE REMOTE BALLAST W/LED POWER INDICATOR & LAMP ON & ALARM	
8513775	S8Q-PA - 8GPM		
	VH 410 - 18 GPM		

TROJAN / R-CAN LAMPS / SLEEVES

PART #	MODEL	DESCRIPTION	PRICE
8513790	S810RL	LAMP FOR S8Q-PA	
8513792	S463RL	LAMP FOR S5Q-PA	
8513795	S36RL	LAMP FOR S12Q-PA	
8513760	602804	LAMP FOR UV MAX B	
8513762	602805	LAMP FOR UV MAX C & D	
8513764	602806	LAMP FOR UV MAX E	
	602807	LAMP FOR UV MAX F	
	602730	QUARTZ SLEVE FOR UV MAX A	
8513770	602731	QUARTZ SLEEVE FOR UV MAX B	
8513772	602732	QUARTZ SLEEVE FOR UV MAX C & D	
	602733	QUARTZ SLEEVE FOR UV MAX E	
	602734	QUARTZ SLEEVE FOR UV MAX F	

CHEMICAL FEEDER

PART #	MODEL	DESCRIPTION	PRICE
3678501	STENNER - 11873	2GPD 115V #45MHP-2 1/4" TUBING	
3678502	STENNER - 11874	2GPD 230V #45MHP-2 1/4" TUBING	
ZPAC2092	STENNER - 11876	10GPD 115V #45MHP-10 1/4" TUBING	
	STENNER - 11879	10GPD 230V #45MHP-10 1/4" TUBING	
3678499	STENNER - 11880	5GPD 115V #85MHP-5 1/4" TUBING	
3678498	STENNER - 11872	5GPD 230V #85MHP-5 1/4" TUBING	

STENNER PARTS

PART #	MODEL	DESCRIPTION	PRICE
ZPAC0094	MCCP201	#1 TUBE ASSY PKG OF 5	
ZPAC0040	MCCP202	#2 TUBE ASSY PKG OF 5	

CHLORINE / CLEANER

PART #	MODEL	DESCRIPTION	PRICE
3353910	3.5 Lb.	CHLORINATOR PELLETS WP 350	
8158890	33010	RES-UP FEEDER 3 PINT	
8158910	45147	RES-UP CLEANER 1 GALLON	

Sales Tax: Extra if applicable

* PRICE ON REQUEST

Prices subject to change without notice

Make a Difference.

INLINE FILTERS HOUSING

PART #	MODEL	DESCRIPTION	PRICE
3680831	WVIH34SS	2 1/2" X 10" CLEAR SUMP VALVE IN HEAD -BLUE HEAD	
3680850	WCT34SS	2 1/2" X 10" SINGLE FILTER CLEAR SUMP PRESSURE RELEASE HEAD-BLUE HEAD	

• ABOVE C/W BRACKET, SCREWS & WRENCH



PENTEK FILTER HOUSING

PART #	MODEL	DESCRIPTION	PRICE
3684830	150469	4" x 10" 3/4"	
3684831	150237	4" x 10" 1"	
3684832	150467	4" x 20" 3/4"	
3684833	150233	4" x 20" 1"	
3680854	150367	BAG FILTER 20"	
3684834	92509	WRENCH	
3684836	150061	BRACKET	

• ABOVE WRENCH AND BRACKET NOT INCLUDED

BIG BLUE FILTER HOUSING

PART #	MODEL	DESCRIPTION	PRICE
3684835	36053	4" X 10" SUMP W/ BLACK HEAD 1" CONN	
3684837	36112	4" X 20" SUMP W/ BLACK HEAD 1" CONN	
3684848	36117	4" X 10" SUMP C/W 3/4" CONN	
ZPAC1348	36116	4" X 20" SUMP C/W 3/4" CONN	

• ABOVE WRENCH AND BARCKET INCLUDED



SPIN DOWN FILTERS - RUSCO

PART #	MODEL	DESCRIPTION	PRICE
8200900	1" S/O	SEDIMENT FILTER	
8200910	1 1/2" S/O	SEDIMENT FILTER	
8200920	2" S/O	SEDIMENT FILTER	

••Specify screen size for above when ordering••

Sales Tax: Extra if applicable

* PRICE ON REQUEST

Prices subject to change without notice.

Make a Difference.

FILTER REPLACEMENT CARTRIDGES

PART #	MODEL	DESCRIPTION	PRICE
3684810	36198	2 1/2" x 10" 5 Micron Dirt/Rust	
ZPAC1295	36203	2 1/2" x 20" 5 Micron Dirt & Rust	

FILTER REPLACEMENT CARTRIDGES

PART #	MODEL	DESCRIPTION	PRICE
3684820	26277	2 1/2" x 10" 5 Micron Activated Carbon	
ZPAC1501	26186	2 1/2" x 20" 5 Micron Activated Carbon	

BIG BLUE CARTRIDGES

PART #	MODEL	DESCRIPTION	PRICE
3684838	36281	4 1/2" X 10" 5 Micron Dirt & Rust 26178	
3684839	36287	4 1/2" x 20" 5 Micron Dirt & Rust 26180	
3684840	36015	4 1/2 x 10 10 Micron Carbon Block 26203	
3684841	26187	4 1/2" x 10" 5 Micron Activated Carbon 26187	
3684842	26188	4 1/2" x 20" 5 Micron Activated Carbon 26188	
3684843	36020	4 1/2" x 20" 10 Micron Carbon Block 26206	

SPIN DOWN FILTERS

PART #	MODEL	DESCRIPTION	PRICE
8200925	3/4" & 1"	Screen only for Spin Down Filter	
8200930	1 1/2"	Screen only for Spin Down Filter	
8200935	2"	Screen only for Spin Down Filter	

FITTINGS FOR SPIN DOWN FILTERS

PART #	MODEL	DESCRIPTION	PRICE
8211060	438-121	Reducer PVC 1" Slip x 3/4" FPT	
8211070	438-210	Reducer PVC 1 1/2" Slip x 3/4" FPT	
8211080	438-211	Reducer PVC 1 1/2" Slip x 1" FPT	
8211084	438-248	Reducer PVC 2" Slip x 3/4" FPT	
8211085	438-249	Reducer PVC 2" Slip x 1" FPT	
8211090	438-250	Reducer PVC 2" Slip x 1 1/4" FPT	

Sales Tax: Extra if applicable

*PRICE ON REQUEST

Prices subject to change without notice.

WATER LEVEL INDICATORS

WATERRA WATER LEVEL INDICATOR

OPEN REEL

PART #	DESCRIPTION	PRICE
3942230	WATER LEVEL WS-2 30 METER - SPECIAL ORDER FOR FEET	
3942250	WATER LEVEL WS-2 50 METER - SPECIAL ORDER FOR FEET	
3942275	WATER LEVEL WS-2 75 METER - SPECIAL ORDER FOR FEET	
3942300	WATER LEVEL WS-2 100 METER - SPECIAL ORDER FOR FEET	

CLOSED REEL

PART #	DESCRIPTION	PRICE
3942235	WATER LEVEL WS-2 30 METER (CLOSED REEL)	



Make a Difference.

DRILLING MUDS

PART #	DESCRIPTION	SIZE	PRICE
9500100	Aqua Gel/Hydra Gel	100 lb. BAG	
3735025	Barafos	50 lb. BAG	
3735056	Bariteweight Material	50 lb. BAG	
3735055	Ben Seal	50 lb. BAG	
3735058	Pell Plug 1/4" Coated	50 lb. PAIL	
3737005	Quik Foam	5 GALLON PAIL	
3735255	Pol - E Flake Lost Circulation	25 lb. BAG	
3735176	Hole Plug 3/8" Chips	50 lb. BAG	
3736000	Quick Gel	50 lb. BAG	
3735078	E-Z Mud	1 GALLON PAIL	
3735075	E-Z Mud	5 GALLON PAIL	
3736004	Quick Grout	50 lb. BAG	
3735610	Quick Trol	20 lb. CARTON	

DRILLING MUDS ACCESSORIES

PART #	DESCRIPTION	SIZE	PRICE
3738400	Mud Balance #1400		
3738500	Mud Cup #202		
3738550	Mud Funnel #201		
3738540	Mini Desander		

GEOTHERMAL GROUT & THERMOCONDUCTIVE MEDIA

PART #	DESCRIPTION	SIZE	PRICE
3736300	BAROID MAX-YEILD HP - GROUT	50 lb. BAG	
3736310	BAROID MAX-YEILD TCM - GRAPHIT	36 lb. BAG	
3736200	CETCO GEOTHERMAL GROUT	50 lb. BAG	
3736210	CETCO TC BOOSTER -GRAPHITE	24 lb. BAG	
3736100	GEO PRO-TG LITE THERMAL GROUT	50 lb. BAG	
3736110	GEO PRO-GRAPHITE POWERTEX	32 lb. BAG	

K & E SILICA SAND

PART #	DESCRIPTION	SIZE	PRICE
4531497	#00N	50 lb. POLY BAG	
4531498	#0	50 lb. POLY BAG	
4531499	#1M	50 lb. POLY BAG	
4531500	#2M	50 lb. POLY BAG	
4531501	#3M	50 lb. POLY BAG	

Sales Tax: Extra if applicable

*PRICE ON REQUEST

Prices subject to change without notice.

ACIDS & JOHNSON CHEMICALS

PART #	DESCRIPTION	PRICE
3002900	Acid Nu-Well 4.5 lbs., Pellets	
3002902	Acid Nu-Well 9 lbs., Pellets	
3003150	Dispersent 310 B10 5 Gallon Pail	

COTEY CHEMICAL

PART #	DESCRIPTION	PRICE
3004020	Dry Acid Special 50 lb. Pail	
3004007	Welgicide Cleaner 50 lb. Pail	
3004006	Mud Nox 1 Gallon Jug	

J200 SERIES

PART #	DESCRIPTION	PRICE
5505000	J200 Well Cleaning Tool	
5505004	Well Cleaning Brush 4"	
5505005	Well Cleaning Brush 5"	
5505006	Well Cleaning Brush 6"	
5505009	Well Cleaning Brush 8"	



J400 SERIES

PART #	DESCRIPTION	PRICE
5505007	J400 Well Cleaning Tool	
5505008	Well Cleaning Brush 8"	
5505010	Well Cleaning Brush 10"	
5505012	Well Cleaning Brush 12"	
5505014	Well Cleaning Brush 14:	
5505016	Well Cleaning Brush 16"	
5505018	Well Cleaning Brush 18"	
5505020	Well Cleaning Brush 20"	
	Well Cleaning Brush 22"	
	Well Cleaning Brush 24"	



EXTRA

PART #	DESCRIPTION	PRICE
3004001	Acid Muratic 4 x 4 Litre Case	

Sales Tax: Extra if applicable

*PRICE ON REQUEST

Prices subject to change without notice.

RIDGID TOOL PRICE LIST
CUTTERS & WHEELS

PART #	DESCRIPTION	MODEL #	PRICE
3630010	42A Wheel Cutter 3/4" - 2"	32870	
3630000	2A HD Pipe Cutter 1/8" - 2"	32820	
3630020	466 4" - 6" Hinged Cutter	83080	
3630675	F3 1 & 2 HD Cutter Wheel	33105	
3630677	F229 3 & 4 HD Cutter Wheel	33125	
3630678	F367 6HD Cutter Wheel for 6S	33145	

DIES

PART #	DESCRIPTION	MODEL #	PRICE
5226006	2" 12R High Speed RH NPT Dies	37895	
5226000	1/2" 12R Alloy RH NPT Dies	37825	
5226001	3/4" 12R Alloy RH NPT Dies	37830	
5226002	1" 12R Alloy RH NPT Dies	37835	
5226003	1 1/4" 12R Alloy RH NPT Dies	37840	
5226004	1 1/2" 12R Alloy RH NPT Dies	37845	
5226005	2" 12R Alloy RH NPT Dies	37850	
5226010	1 - 2" HS RH 65 R NPT Dies	38100	
5226008	1 - 2" HS RH NPT Dies For Universal	47770	

DIE HEADS

PART #	DESCRIPTION	MODEL #	PRICE
	1/2" 12R RH Alloy Die Head	37390	
ZIND0930	3/4" 12R RH Alloy Die Head	37395	
ZIND0931	1" 12R RH Alloy Die Head	37400	
	1 1/4" 12R RH Alloy Die Head	37405	
	1 1/2" 12R RH Alloy Die Head	37410	
5225002	2" 12R RH Alloy Die Head	37415	
5225001	12R Ratchet & Handle	30118	

CHAIN WRENCHES & TONGS

PART #	DESCRIPTION	MODEL #	PRICE
5550500	C14 Chain Wrench	31315	
5550525	C18 Chain Wrench	31320	
5550550	C24 Chain Wrench	31325	
5550600	C36 Chain Wrench	31330	
5550700	#3233 Chain Tongs 1" TO 6"	92675	
5550800	#3235 Chain Tongs 1 1/2" TO 8"	92680	
5550802	#3237 Chain Tongs 2" TO 12"	92685	

Sales Tax: Extra if applicable

*PRICE ON REQUEST

Prices subject to change without notice.

RIDGID TOOL PRICE LIST

PIPE WRENCH

PART #	DESCRIPTION	MODEL #	PRICE
5528000	10" Aluminum Pipe Wrench	31090	
5530000	14" Aluminum Pipe Wrench	31095	
5540000	18" Aluminum Pipe Wrench	31100	
5540010	24" Aluminum Pipe Wrench	31105	
5540015	36" Aluminum Pipe Wrench	31110	
5540020	48" Aluminum Pipe Wrench	31115	
5540025	10" Straight Pipe Wrench	31010	
5540030	14" Straight Pipe Wrench	31020	
5540040	18" Straight Pipe Wrench	31025	
5540050	24" Straight Pipe Wrench	31030	
5540060	36" Straight Pipe Wrench	31035	
5540070	48" Straight Pipe Wrench	31040	
5540080	60" Straight Pipe Wrench	31045	

HEEL JAW & PIN ASSEMBLY

PART #	DESCRIPTION	MODEL #	PRICE
5541800	12 - 14" Heel Jaw & Pin Assembly	31635	
5541810	18" Heel Jaw & Pin Assembly	31675	
5541820	24" Heel Jaw & Pin Assembly	31700	
5541830	36" Heel Jaw & Pin Assembly	31725	
5541835	48" Heel Jaw & Pin Assembly	31750	
5541871	60" Heel Jaw & Pin Assembly	31775	

HOOK JAW

PART #	DESCRIPTION	MODEL #	PRICE
5541885	14" Hook Jaw	31655	
5541886	18" Hook Jaw	31670	
5541887	24" Hook Jaw	31695	
5541888	36" Hook Jaw	31720	
5541889	48" Hook Jaw	31745	
5541910	60" Hook Jaw	31770	
5541948	Nut 14"	31665	
5541949	Nut 18"	31685	
5541950	Nut 24"	31710	
5541952	Nut 36"	31735	
5541954	Nut 48"	31760	
5541956	Nut 60"	31785	

Make a Difference.



OTHER WELLMASTER PRODUCTS

ROPE

PART #	DESCRIPTION	PRICE
8479400	1/4" X 500 Foot Reel Braided Rope	
8479500	5/16 X 500 Foot Reel Braided Rope	
8479375	ROPE 1/4" POLY X 1300' REEL	
5110000	ROPE MANILLA 1 1/4" GRADE 1	

THREAD SEALANTS

PART #	DESCRIPTION	PRICE
3897274	1/2 Pt. Brush Top Masters Pro Dope with Teflon	
3897275	Masp-05 Pipe Sealant	
5177970	1/2" X 540" Teflon Tape (Orange T-Tape)	
5177980	1/2" x 480" Teflon Tape (White)	
5177996	3/4" x 540" Petro Tape	
ZPAC1654	1/2" x 540" BMI Tape Pink	
8528300	3/4" x 66" PVC Electrical Tape	

LUBRICANTS

PART #	DESCRIPTION	PRICE
3895980	8.6 KG Jet Lube <i>Kopr Kote</i>	
3895985	20 KG Jet Lube <i>Kopr Kote</i>	
3895971	3.5 Gallon NCS30	
ZWWW2425	1 Gallon Eco-Safe	
ZWWW2429	2 Gallon Eco-Safe	
3895990	5 Gallon Eco-Safe	
3895921	2.5 Gallon Well Guard	
3185000	Dope Brush	
4082820	Cutting Oil 4L SuperCut 48	

CHAIN WRENCH

PART #	DESCRIPTION	PRICE
5545650	CW24 CHAIN WRENCH	

REED TOOLS

PART #	DESCRIPTION	PRICE
3630024	CUTTER TOOL HS6 4-6" #03130	
3630025	CUTTER TOOL HS8 6"-8" #03140	
3630570	CUTTER WHEEL HS6 #03506	
3630565	CUTTER WHEEL HS8-12 #03508	



Sales Tax: Extra if applicable

*PRICE ON REQUEST

Prices subject to change without notice.

BRASS PIPE FITTINGS & NIPPLES
BUSHINGS

PART #	DESCRIPTION	PRICE
7510070	3/4" x 1/2"	
7510072	1" x 3/4"	
7510073	1 1/4" X 3/4"	
7510074	1 1/4" x 1"	
7510075	2" x 1 1/4"	
7510076	2" x 1 1/2"	
7510071	1" x 1/4"	

COUPLINGS

PART #	DESCRIPTION	PRICE
7510080	1/2"	
7510082	3/4"	
7510084	1"	
7510086	1 1/4"	
7510087	1" x 3/4" Reducer	
7510088	1 1/4" x 1" Reducer	

ELBOWS 90

PART #	DESCRIPTION	PRICE
7510090	1/2"	
7510092	3/4"	
7510094	1"	
7510096	1 1/4"	
7510115	1" x 3/4" Reducer	

STREET ELBOWS 90

PART #	DESCRIPTION	PRICE
7510100	1/2"	
7510102	3/4"	
7510104	1"	
7510106	1 1/4"	

TEES

PART #	DESCRIPTION	PRICE
7510160	1/2"	
7510162	3/4"	
7510164	1"	
7510165	1 1/4"	
7510158	1" X 1" X 1/4"	
7510159	1" x 1" x 1/2"	
ZWWW0502	1 x 1 x 3/4	

NIPPLES

PART #	DESCRIPTION	PRICE
7510120	1/4" x Close	
7510121	1/4" x 2"	
7510122	1/4" x 3"	
7510123	1/4" x 4"	
7510124	1/4" x 6"	
7510125	1/2" x Close	
7510126	1/2" x 2"	
ZWWW0309	1/2" x 3"	
7510127	1/2" x 4"	
7510128	1/2" x 6"	
7510129	3/4" x Close	
7510130	3/4" x 2"	
7510131	3/4" x 3"	
7510132	3/4" x 4"	
7510134	3/4" x 6"	
7510140	1" x Close	
7510142	1" x 2"	
7510143	1" x 3"	
7510144	1" x 4"	
7510146	1" x 6"	
7510147	1 1/4" x Close	
7510145	1 1/4" x 2"	
7510148	1 1/4" x 4"	
7510149	1 1/4" x 6"	

PLUGS

PART #	DESCRIPTION	PRICE
7510152	1/4"	
7510154	1/2"	
7510156	3/4"	
7510157	1"	

UNIONS

PART #	DESCRIPTION	PRICE
7510166	1/2"	
7510168	3/4"	
7510170	1"	

ELBOWS 45

PART #	DESCRIPTION	PRICE
7510117	3/4"	
7510118	1"	

Standard "Black" Malleable Pipe Fittings - 150 lb.

CAPS			HOLLOW PLUGS			MALL. COUPLING			MERCH. COUPLING		
SIZE	PRICE	PART #	SIZE	PRICE	PART #	SIZE	PRICE	PART #	SIZE	PRICE	PART #
1/8"		7003400	1/8"		7008200	1/8"			1/8"		7004000
1/4"		7003410	1/4"		7008210	1/4"			1/4"		7004010
3/8"		7003420	3/8"		7008220	3/8"			3/8"		7004020
1/2"		7003430	1/2"		7008230	1/2"		7003830	1/2"		7004030
3/4"		7003440	3/4"		7008240	3/4"		7003840	3/4"		7004040
1"		7003450	1"		7008250	1"		7003850	1"		7004050
1 1/4"		7003460	1 1/4"		7008260	1 1/4"		7003860	1 1/4"		7004060
1 1/2"		7003470	1 1/2"		7008270	1 1/2"		7003865	1 1/2"		7004070
2"		7003480	2"		7008280	2"		7003870	2"		7004080
2 1/2"			2 1/2"		7008290	2 1/2"			2 1/2"		7004090
3"		7003500	3"		7008300	3"		7003890	3"		M7004100
4"		7003520	4"		7008320	4"		7003900	4"		M7004120
5"			5"		7008330	5"			5"		
6"			6"		7008340	6"			6"		

90° ELBOWS			90° STR. ELBOWS			45° ELBOWS			RAILWAY UNION		
SIZE	PRICE	PART #	SIZE	PRICE	PART #	SIZE	PRICE	PART #	SIZE	PRICE	PART #
1/8"		7005300	1/8"		7005800	1/8"			1/8"		7011800
1/4"		7005310	1/4"		7005810	1/4"		7004710	1/4"		7011810
3/8"		7005320	3/8"		7005820	3/8"		7004720	3/8"		7011815
1/2"		7005330	1/2"		7005830	1/2"		7004730	1/2"		7011830
3/4"		7005340	3/4"		7005840	3/4"		7004740	3/4"		7011840
1"		7005350	1"		7005850	1"		7004750	1"		7011850
1 1/4"		7005360	1 1/4"		7005860	1 1/4"		7004760	1 1/4"		7011860
1 1/2"		7005370	1 1/2"		7005870	1 1/2"		7004770	1 1/2"		7011870
2"		7005380	2"		7005880	2"		7004780	2"		7011880
2 1/2"		7005390	2 1/2"		7005890	2 1/2"		7004790	2 1/2"		
3"		7005400	3"		7005895	3"		7004800	3"		7011900
4"		7005420	4"		7005910	4"		7004820	4"		
5"			5"			5"			5"		
6"			6"			6"			6"		

Sales Tax: Extra if applicable

*PRICE ON REQUEST

Prices subject to change without notice.

Standard "Black" Malleable Pipe Fittings - 150 lb.

STD. TEE			REDUCING TEE			REDUCING CPLG		
SIZE	PRICE	PART #	SIZE	PRICE	PART #	SIZE	PRICE	PART #
1/8"		7010000	1/4" x 1/4" x 1/8"			1/4" x 1/8"		7004161
1/4"		7010010	3/8" x 3/8" x 1/8"			3/8" x 1/4"		7004172
3/8"		7010020	3/8" x 3/8" x 1/4"			1/2" x 1/8"		7004180
1/2"		7010030	3/8" x 3/8" x 1/2"			1/2" x 1/4"		7004182
3/4"		7010040	1/2" x 3/8" x 3/8"			1/2" x 3/8"		7004183
1"		7010050	1/2" x 1/2" x 1/4"			3/4" x 1/8"		7004191
1 1/4"		7010060	1/2" x 1/2" x 3/8"			3/4" x 1/4"		7004192
1 1/2"		7010070	1/2" x 1/2" x 3/4"			3/4" x 3/8"		7004193
2"		7010080	3/4" x 3/4" x 3/8"			3/4" x 1/2"		7004194
2 1/2"		7010090	3/4" x 3/4" x 1/2"		7010450	1" x 1/4"		
3"		7010100	3/4" x 3/4" x 1"			1" x 3/8"		7004203
3 1/2"		7010110	1" x 1/2" x 1/2"		7010490	1" x 1/2"		7004204
4"		7010120	1" x 1/2" x 3/4"			1" x 3/4"		7004205
5"		7010130	1" x 1/2" x 1"		7010475	1 1/4" x 1/2"		7004214
6"		7010140	1" x 3/4" x 1/2"			1 1/4" x 3/4"		7004215
			1" x 3/4" x 3/4"		7010530	1 1/4" x 1"		7004216
			1" x 3/4" x 1"		7010540	1 1/2" x 1/2"		
			1" x 1" x 1/2"		7010570	1 1/2" x 3/4"		
			1" x 1" x 3/4"		7010580	1 1/2" x 1"		7004226
			1" x 1" x 1 1/4"			1 1/2" x 1 1/4"		7004227
			1 1/4" x 1" x 1/2"			2" x 1/2"		
			1 1/4" x 1" x 3/4"			2" x 3/4"		
			1 1/4" x 1 1/4" x 1/2"			2" x 1"		7004236
			1 1/4" x 1 1/4" x 3/4"			2" x 1 1/4"		7004237
			1 1/4" x 1 1/4" x 1"		7010740	2" x 1 1/2"		7004238
			1 1/4" x 1 1/4" x 1 1/2"			2 1/2" x 1 1/2"		
			1 1/2" x 1 1/2" x 1/2"			2 1/2" x 2"		7004250
			1 1/2" x 1 1/2" x 3/4"			3" x 2"		7004258
			1 1/2" x 1 1/2" x 1"			3" x 2 1/2"		
			1 1/2" x 1 1/2" x 1 1/4"			4" x 2"		7004276
			2" x 1" x 1"		7010972	4" x 3"		
			2" x 1" x 2"			6" x 5"		
			2" x 1 1/4" x 1 1/4"		7010980			
			2" x 1 1/2" x 1 1/2"		7011005			
			2" x 2" x 1/2"		7011020			
			2" x 2" x 3/4"		7011025			
			2" x 2" x 1"		7011030			
			2" x 2" x 1 1/4"					
			2" x 2" x 1 1/2"					

90° REDUCING ELBOWS		
SIZE	PRICE	PART #
1/2" x 1/4"		7005480
1/2" x 3/8"		7005490
3/4" x 1/2"		7005500
1" x 3/8"		7005540
1" x 1/2"		7005550
1" x 3/4"		7005560
1 1/4" x 1/2"		7005570
1 1/4" x 3/4"		7005580
1 1/4" x 1"		7005590
1 1/2" x 3/4"		7005600
1 1/2" x 1"		7005610
1 1/2" x 1 1/4"		
2" x 1"		
2" x 1 1/4"		7005640
2" x 1 1/2"		7005660

Sales Tax: Extra if applicable

*PRICE ON REQUEST

Prices subject to change without notice.

STANDARD BLACK BUSHINGS AND NIPPLES

BUSHINGS			BUSHINGS			NIPPLES		
SIZE	PRICE	PART #	SIZE	PRICE	PART #	SIZE	PRICE	PART #
1/4" x 1/8"		7003001	3 1/2" x 2 1/2"			1/2" x 6"		7007341
3/8" x 1/8"		7003011	3 1/2" x 3"		7003110	3/4" x Close		7007361
3/8" x 1/4"		7003012	4" x 1"		7003114	3/4" x 1 1/2"		7007363
1/2" x 1/8"		7003021	4" x 1 1/4"			3/4" x 2"		7007365
1/2" x 1/4"		7003022	4" x 1 1/2"		7003115	3/4" x 2 1/2"		7007366
1/2" x 3/8"		7003023	4" x 2"		7003116	3/4" x 3"		7007369
3/4" x 1/8"		7003031	4" x 2 1/2"		7003117	3/4" x 4"		7007373
3/4" x 1/4"		7003032	4" x 3"		7003118	3/4" x 5"		7007377
3/4" x 3/8"		7003033	4" x 3 1/2"		7003119	3/4" x 6"		7007381
3/4" x 1/2"		7003034	5" x 4"		7003129	1" x Close		7007401
1" x 1/4"		7003042	6" x 4"		7003150	1" x 2"		7007405
1" x 3/8"		7003043	6" x 5"		7003170	1" x 2 1/2"		7007407
1" x 1/2"		7003044				1" x 3"		7007409
1" x 3/4"		7003045				1" x 3 1/2"		7007411
1 1/4" x 1/4"						1" x 4"		7007413
1 1/4" x 3/8"		7003053				1" x 5"		7007416
1 1/4" x 1/2"		7003054				1" x 6"		7007421
1 1/4" x 3/4"		7003055				1 1/4" x Close		7007441
1 1/4" x 1"		7003056				1 1/4" x 2"		7007445
1 1/2" x 3/8"						1 1/4" x 2 1/2"		7007446
1 1/2" x 1/2"						1 1/4" x 3"		7007449
1 1/2" x 3/4"		7003065				1 1/4" x 4"		7007453
1 1/2" x 1"		7003066				1 1/4" x 5"		7007457
1 1/2" x 1 1/4"		7003067				1 1/4" x 6"		7007461
2" x 1/4"						1 1/2" x Close		7007481
2" x 3/8"						1 1/2" x 2"		7007485
2" x 1/2"		7003072				1 1/2" x 3"		7007489
2" x 3/4"		7003073				1 1/2" x 4"		7007493
2" x 1"		7003076				1 1/2" x 6"		7007501
2" x 1 1/4"		7003077				2" x Close		7007521
2" x 1 1/2"		7003078				2" x 2 1/2"		7007525
2 1/2" x 3/4"						2" x 3"		7007529
2 1/2" x 1"		7003086				2" x 4"		7007533
2 1/2" x 1 1/4"		7003087				2" x 5"		7007537
2 1/2" x 1 1/2"						2" x 6"		7007541
2 1/2" x 2"		7003090				2 1/2" x Close		7007561
3" x 1"						3" x Close		7007601
3" x 1 1/4"						3" x 4"		7007613
3" x 1 1/2"						3" x 5"		7007617
3" x 2"		7003098				3" x 6"		7007621
3" x 2 1/2"						4" x Close		7007681
3 1/2" x 1 1/2"						4" x 4"		7007693
3 1/2" x 2"						4" x 6"		7007701

Sales Tax: Extra if applicable

* PRICE ON REQUEST

Prices subject to change without notice.

Standard "Galvanized" Malleable Pipe Fittings - 150 lb.

CAPS			HOLLOW PLUGS			MERCH COUPLING			90° ELBOWS		
SIZE	PRICE	PART #	SIZE	PRICE	PART #	SIZE	PRICE	PART #	SIZE	PRICE	PART #
1/8"			1/8"		7209200	1/8"		7201600	1/8"		7205000
1/4"		7201010	1/4"		7209210	1/4"		7201610	1/4"		7205010
3/8"			3/8"		7209220	3/8"			3/8"		7205020
1/2"		7201030	1/2"		7209230	1/2"		7201630	1/2"		7205030
3/4"		7201040	3/4"		7209240	3/4"		7201640	3/4"		7205040
1"		7201050	1"		7209250	1"		7201650	1"		7205050
1 1/4"		7201060	1 1/4"		7209260	1 1/4"		7201660	1 1/4"		7205060
1 1/2"		7201070	1 1/2"		7209270	1 1/2"		7201670	1 1/2"		7205070
2"		7201080	2"		7209280	2"		7201680	2"		7205080
2 1/2"			2 1/2"		7209290	2 1/2"			2 1/2"		
3"			3"		7209300	3"			3"		7205100
3 1/2"			3 1/2"			3 1/2"			3 1/2"		
4"			4"			4"		M7201720	4"		
5"			5"			5"			5"		
6"			6"			6"			6"		

90° STR. ELBOWS			45° ELBOWS			RAILWAY UNIONS			STD. TEES		
SIZE	PRICE	PART #	SIZE	PRICE	PART #	SIZE	PRICE	PART #	SIZE	PRICE	PART #
1/8"		7205805	1/8"			1/8"			1/8"		
1/4"		7205810	1/4"		7204010	1/4"			1/4"		7215010
3/8"		7205815	3/8"		7204020	3/8"			3/8"		7215020
1/2"		7205830	1/2"		7204030	1/2"		7217030	1/2"		7215030
3/4"		7205840	3/4"		7204040	3/4"		7217040	3/4"		7215040
1"		7205850	1"		7204050	1"		7217050	1"		7215050
1 1/4"		7205860	1 1/4"		7204060	1 1/4"		7217060	1 1/4"		7215060
1 1/2"		7205870	1 1/2"		7204070	1 1/2"		7217070	1 1/2"		7215070
2"		7205880	2"		7204080	2"		7217080	2"		7215080
2 1/2"			2 1/2"			2 1/2"			2 1/2"		
3"			3"			3"			3"		7215100
3 1/2"			3 1/2"			3 1/2"			3 1/2"		
4"			4"		7204120	4"		7011920	4"		ZIND0958
5"			5"			5"			5"		
6"			6"			6"			6"		

90° REDUCING ELBOWS		
SIZE	PRICE	PART #
1" x 3/4"		7205260
1 1/4" x 1"		7205290

REDUCING TEES		
SIZE	PRICE	PART #
3/4" x 3/4" x 1/2"		7215450
1" x 1" x 3/4"		7215500

Sales Tax: Extra if applicable * PRICE ON REQUEST

Prices subject to change without notice.

STANDARD "GALVANIZED" BUSHINGS AND NIPPLES

REDUCING COUPLINGS			REDUCING BUSHINGS			NIPPLES		
SIZE	PRICE	PART #	SIZE	PRICE	PART #	SIZE	PRICE	PART #
1/4" x 1/8"			3/4" x 1/8"			1/2" x 2 1/2"		7208127
3/8" x 1/4"		7202022	3/4" x 1/4"		7200032	1/2" x 3"		7208129
1/2" x 1/8"			3/4" x 3/8"		7200033	1/2" x 3 1/2"		7208131
1/2" x 1/4"			3/4" x 1/2"		7200034	1/2" x 4"		7208133
1/2" x 3/8"		7202033	1" x 1/4"		7200042	1/2" x 6"		7208141
3/4" x 1/8"			1" x 3/8"		7200043	3/4" x Close		7208161
3/4" x 1/4"			1" x 1/2"		7200044	3/4" x 1 1/2"		7208163
3/4" x 3/8"			1" x 3/4"		7200045	3/4" x 2"		7208165
3/4" x 1/2"		7202044	1 1/4" x 1/4"		7200052	3/4" x 2 1/2"		7208167
1" x 1/4"			1 1/4" x 3/8"			3/4" x 3"		7208169
1" x 3/8"			1 1/4" x 1/2"		7200054	3/4" x 3 1/2"		7208171
1" x 1/2"		7202054	1 1/4" x 3/4"		7200055	3/4" x 4"		7208173
1" x 3/4"		7202055	1 1/4" x 1"		7200056	3/4" x 5"		7208177
1 1/4" x 3/8"			1 1/2" x 3/8"			3/4" x 6"		7208181
1 1/4" x 1/2"			1 1/2" x 1/2"			1" x Close		7208201
1 1/4" x 3/4"		7202065	1 1/2" x 3/4"			1" x 2"		7208205
1 1/4" x 1"		7202066	1 1/2" x 1"		7200066	1" x 2 1/2"		7208207
1 1/2" x 1/2"			1 1/2" x 1 1/4"		7200067	1" x 3"		7208209
1 1/2" x 3/4"			2" x 1/4"			1" x 3 1/2"		7208211
1 1/2" x 1"		7202076	2" x 3/8"			1" x 4"		7208213
1 1/2" x 1 1/4"		7202077	2" x 1/2"		7200074	1" x 5"		7208217
2" x 1/2"			2" x 3/4"		7200075	1" x 6"		7208221
2" x 3/4"			2" x 1"		7200076	1" x 8"		7208225
2" x 1"		7202086	2" x 1 1/4"		7200077	1" x 10"		7208230
2" x 1 1/4"		7202088	2" x 1 1/2"		7200078	1 1/4" x Close		7208241
2" x 1 1/2"						1 1/4" x 2"		7208245
2" 1/2 x 1 1/2"						1 1/4" x 3"		7208249
2" 1/2 x 2"						1 1/4" x 4"		7208253
3" x 2"						1 1/4" x 5"		7208257
3" x 2 1/2"						1 1/4" x 6"		7208261
4" x 2"						1 1/2" x Close		7208281
4" x 3"						1 1/2" x 2"		7208285
6" x 5"						1 1/2" x 2 1/2"		7208287
						1 1/2" x 3"		7208289
						1 1/2" x 4"		7208293
						1 1/2" x 5"		7208297
						2" x Close		7208321
						2" x 3"		7208329
						2" x 4"		7208330
						2" x 6"		7208341
						3" x 4"		7208405
						4" x Close		7208481
						4" x 6"		7208486

REDUCING BUSHINGS		
SIZE	PRICE	PART #
1/4 x 1/8		7200001
3/8 x 1/8		
3/8 x 1/4		7200012
1/2 x 1/8		7200020
1/2 x 1/4		7200022
1/2 x 3/8		7200023

NIPPLES		
SIZE	PRICE	PART #
1/4" x Close		7208041
1/4" x 1 1/2"		7208043
1/4" x 2"		7208045
1/4" x 2 1/2"		7208047
1/4" x 3"		7208049
1/4" x 4"		7208053
1/4" x 6"		7208061
1/4" x 10"		7208063
3/8" x Close		7208081
3/8" x 1 1/2"		7208082
3/8" x 2"		7208085
3/8" x 3"		7208087
1/2" x Close		7208121
1/2" x 1 1/2"		7208123
1/2" x 2"		7208125

Sales Tax: Extra if applicable

* PRICE ON REQUEST

Prices subject to change without notice.

Make a Difference.

PRICE ON REQUEST

Standard Black Pipe

SIZE	DIAMETERS			WEIGHT		PLAIN END		THREADED/COUPLED	
	O.D.	I.D.	WALL	T/C	P.E.	PRICE	PART #	PRICE	PART #
1/8"	0.405	0.269	0.069	0.24	0.24		4140800		4160000
1/4"	0.540	0.364	0.088	0.42	0.42		4141000		4162000
3/8"	0.657	0.493	0.091	0.57	0.57		4142000		
1/2"	0.840	0.622	0.109	0.85	0.85		4143000		4163000
3/4"	1.050	0.824	0.113	1.13	1.13		4144000		4164000
1"	1.315	1.049	0.133	1.68	1.68		4145000		4165000
1 1/4"	1.660	1.380	0.140	2.28	2.27		4146000		4166000
1 1/2"	1.900	1.610	0.145	2.73	2.72		4147000		4167000
2"	2.375	2.067	0.154	3.68	3.65		4148000		4168000
2 1/2"	2.875	2.469	0.203	5.82	5.79		4150000		4169000
3"	3.500	3.068	0.216	7.62	7.58		4152000		4170000
3 1/2"	4.000	3.548	0.226	9.20	9.11		4153000		
4"	4.500	4.026	0.237	10.89	10.79		4153500		4172000

Standard Galvanized Pipe

SIZE	DIAMETERS			WEIGHT		PLAIN END		THREADED/COUPLED	
	O.D.	I.D.	WALL	T/C	P.E.	PRICE	PART #	PRICE	PART #
1/8"	0.405	0.269	0.068	0.24	0.24		4174950		4178000
1/4"	0.540	0.364	0.088	0.42	0.42		4174975		4178500
3/8"	0.675	0.493	0.091	0.57	0.57				4179000
1/2"	0.840	0.622	0.109	0.85	0.85		4180000		4180000
3/4"	1.050	0.824	0.113	1.13	1.13		4175300		4181000
1"	1.315	1.049	0.133	1.68	1.68		4175500		4182000
1 1/4"	1.660	1.380	0.140	2.28	2.27		4175600		4183000
1 1/2"	1.900	1.610	0.145	2.73	2.72		4184000		4184000
2"	2.375	2.067	0.154	3.68	3.65		4176000		4185000
2 1/2"	2.875	2.469	0.203	5.82	5.79		4186000		4186000
3"	3.500	3.068	0.216	7.62	7.58		4176700		4187000
3 1/2"	4.000	3.548	0.226	9.20	9.11		4177000		
4"	4.500	4.026	0.237	10.89	10.75		4177500		4189000

Extra Heavy Pipe

SIZE	DIAMETERS			WEIGHT		PLAIN END	
	O.D.	I.D.	WALL	T/C	P.E.	PRICE	PART #
1/8"	0.405	0.215	0.095	0.31	0.31		
1/4"	0.540	0.302	0.119	0.54	0.54		
3/8"	0.675	0.423	0.126	0.74	0.74		4217500
1/2"	0.840	0.546	0.147	1.09	1.09		4218000
3/4"	1.050	0.742	0.154	1.48	1.47		4219000
1"	1.315	0.957	0.179	2.18	2.17		4220000
1 1/4"	1.660	1.278	0.191	3.02	3.00		4220500
1 1/2"	1.900	1.500	0.200	3.66	3.63		4221000
2"	2.375	1.939	0.218	5.07	5.02		4223000
2 1/2"	2.875	2.323	0.276	7.73	7.66		4224000
3"	3.500	2.900	0.300	10.33	10.25		4225000
3 1/2"	4.000	3.364	0.318	12.63	12.51		4226000
4"	4.500	3.826	0.337		14.98		

Sales Tax: Extra if applicable * **PRICE ON REQUEST** Prices subject to change without notice.

FLANGES, WELD FITTINGS & ACCESSORIES

R.F. 150# SLIP ON			R.F. 150# THREADED			R.R. 150# F.F. GASKET					
SIZE	PRICE	PART #	SIZE	PRICE	PART #	SIZE	PRICE	PART #	SIZE	PRICE	PART #
4"		3703865	4"		3703866	4"		3739147			
5"		3703867	5"		3703878	5"		3739148			
6"		3703875	6"		3703876	6"		3739149			
8"		3703880	8"		3703881	8"		3739150			

MORE SIZES AVAILABLE UPON REQUEST

WELD REDUCER			WELD ELB. 90°			WELD TEE					
SIZE	PRICE	PART #	SIZE	PRICE	PART #	SIZE	PRICE	PART #	SIZE	PRICE	PART #
4"X2"		7355995	2"		7350950	2"		7357165			
4"X3"		7356000	3"		7350970	3"		7357170			
5"X4"		7356006	4"		7350990	4"		7357175			
6"X3"		7356009	5"		7350995	6"		7357176			
6"X5"		7356010	6"		7354000						
6"X4"		7356011									
8"X6"		7356018									
10"X8"		7356019									

Sales Tax: Extra if applicable * PRICE ON REQUEST Prices subject to change without notice.